

Fretted Instrument

On-Stage®

Guitar Hanger
GPA7155
(Page 20)
Utility Stand
for Pedal Board
GPA1003
(Page 36)

Pedal Board
GPB3000
(Page 21)

Push-Down
Spring-Up
Guitar Stand
for Acoustic
Guitar
GS7141
(Page 8)



● **Classic Guitar Stand**
XCG-4
11051

Application: Holds 1 guitar
Padding: EVA rubber
Height Adjustment: 19.25" - 24"
Leg Housing: Sheet metal
Tubing: 17mm / 22mm
Color: Black



● **Flip-It® Gran Guitar Stand**
GS7153B-B
12514

Application: Holds 1 guitar
Height Adjustment: 12" - 16.25"
Padding: EVA rubber
Construction: Steel
Color: Black



● **Duo Flip-It® Guitar Stand**
GS7253B-B
12513

Application: Holds 2 guitars
Padding: EVA rubber
Leg Housing: Sheet metal
Tubing: 19mm / 22mm



Tri Flip-It® Guitar Stand
GS7353B-B
12512

Application: Holds 3 guitars
Padding: EVA rubber
Leg Housing: Sheet metal
Tubing: 19mm / 22mm
Color: Black



Professional Flip-It®
A-Frame Guitar Stand
GS7465
12912

Application: Holds 1 guitar
Height Adjustment: 18.5" - 26.5"
Tubing: 1" x 1" Square
Tilt Angle: 10°
Color: Black



Wooden Guitar Stand
WGS100
10722

Application: Holds 1 guitar
Height Adjustment: 19.25" - 24"
Construction: Solid rosewood / steel
Leg Housing: Sheet metal
Tubing: 19mm / 33mm
Color: Rosewood / black



Deluxe Folding Double
Guitar Stand
GS7221BD
10748

Application: Holds 2 guitars
Height Adjustment: 19" - 33"
Base Spread: 22"
Padding: EVA rubber
Color: Black



Deluxe Folding Triple Guitar Stand
GS7321BT
12022

Application: Holds 3 guitars
Height Adjustment: 17" - 32"
Base Spread: 22"
Padding: EVA rubber
Color: Black



Hang-It! Single Guitar Stand
GS7155
10720

Application: Holds 1 guitar (fits most acoustic and hollow body guitars)
Height Adjustment: 24.5" - 42.5"
Padding: EVA rubber
Construction: Steel
Color: Black



Hang-It! Double Guitar Stand

GS7255

10749

Application: Holds 2 guitars
Height Adjustment: 36" - 42"
Padding: EVA rubber
Leg Housing: Sheet metal
Tubing: 19mm / 25mm
Color: Black



Hang-It! Triple Guitar Stand

GS7355

10721

Application: Holds 3 guitars
Height Adjustment: 36" - 42"
Padding: EVA rubber
Leg Housing: Sheet metal
Tubing: 19mm / 25mm
Color: Black



Hang-It! ProGrip Guitar Stand

GS8100

10704

Application: Holds 1 guitar
Height Adjustment: 30" - 43"
Weight Capacity: 36 lbs.
Padding: EVA rubber
Tubing: 17mm / 25mm
Color: Black



Hang-It! ProGrip II Guitar Stand

GS8200

10710

Application: Holds 1 guitar
Height Adjustment: 30" - 43"
Weight Capacity: 40 lbs.
Padding: Inert rubber
Tubing: 17mm / 25mm
Color: Black



Six Guitar Stand

GS7652B

12975

Application: Holds 6 guitars
Padding: EVA rubber
Leg Housing: Hi-impact plastic
Tubing: 25mm / 30mm
Color: Black



3-Space Foldable Multi Guitar Rack

GS7361

10461

Application: Holds 3 guitars
Height: 29"
Base Spread: 15" (L) x 20" (W)
Folded Dimensions: 20" (L) x 30" (W) x 6" (H)
Padding: EVA foam
Color: Black



5-Space Foldable Multi Guitar Rack

GS7561
10587
Application: Holds up to 5 guitars
Padding: EVA rubber
Height: 29"
Base Spread: 25" (L) x 20" (W)
Folded Dimensions: 25" (L) x 30" (W) x 6" (H)
Color: Black

A.



A. Guitar Case Rack

GS7565B
12984 / Black
GS7565W
12985 / Natural
Application: Holds up to 5 acoustic or electric guitar cases in various combinations
Construction: Wood
Dimensions: 36" (L) x 13.25" (W) x 30" (H)
Folded Dimensions: 36" (L) x 34" (W) x 4" (H)

B.



B. Guitar Rack

GS7563B
12933 / Black
GS7563W
12932 / Natural
Application: Holds up to 6 electric guitars or 3 acoustic guitars, or any combination of
Construction: Wood, metal, EVA rubber
Dimensions: 25.5" (L) x 14" (W) x 30.5" (H)
Folded Dimensions: 34.5" (L) x 25.5" (W) x 4" (H)



Push-Down Spring-Up Locking Electric Guitar Stand

GS7140
13519
Application: Holds 1 guitar (fits most electric and bass guitars with cutaways)
Height Adjustment: 12" - 16.25"
Padding: EVA rubber
Construction: Steel
Weight: 2.6 lbs.
Color: Black



Push-Down Spring-Up Locking Acoustic Guitar Stand

GS7141
13520
Application: Holds 1 guitar (fits most acoustic and hollow body guitars)
Height Adjustment: 16.5" - 22" using provided holes
Padding: EVA rubber
Construction: Steel
Weight: 2.7 lbs.



Standard Single A-Frame Guitar Stand

GS7362B
10725
Application: Holds 1 guitar
Padding: EVA rubber
Tubing: 1" x 1/2" Square
Tilt Angle: 10°
Color: Black



Professional Single A-Frame Guitar Stand

GS7462B
11239
Application: Holds 1 guitar
Padding: EVA rubber
Tubing: 1" x 1" Square
Tilt Angle: 10°
Color: Black



Professional A-Frame Double Guitar stand

GS7462DB
10750
Application: Holds 2 guitars
Padding: EVA rubber
Tubing: 1" x 1" Square
Tilt Angle: 10°
Color: Black



Collapsible A-Frame Guitar Stand

GS7364
13493
Application: Holds 1 guitar
Padding: EVA rubber
Tubing: 1" x 1/2" Square
Tilt Angle: 10°
Color: Black



Wire Folk Instrument Stand

GS5000
10588
Application: Small fretted instruments
Construction: 7mm steel wire
Folded Dimensions: 11.42" (L) x 11" (W) x 1.25" (H)
Base Spread: 5.12"
Color: Black



Wire Folding Guitar Stand

GS7655
10592
Application: Holds 1 guitar
Folded Dimensions: 15.5" (L) x 13" (W) x 1.25" (H)
Base Spread: 6.25" - 10.75"
Padding: EVA Rubber
Position Adjustments: 5
Color: Black



Mighty Uke Stand

GS6000B
10087
Application: Small fretted instruments
Construction: Plastic
Folded Dimensions: 8.5" (L) x 3.5" (W) x 1.25" (H)
Base Spread: 5.25"
Yoke Depth: 2.5" - 3.5"
Color: Black



Mighty Guitar Stand

GS6500
10487
Application: Holds 1 guitar
Construction: Plastic
Folded Dimensions: 12.25" (L) x 5.85" (W) x 1.65" (H)
Base Spread: 10.6"
Yoke Depth: 3.2" - 5.1"
Color: Black



4550 Series Guitar Bags

The 4550 Series Guitar Bags are made from a durable nylon material and the series includes a bag to fit either electric, acoustic, classical or bass guitars. Features include rugged 600-D nylon material which repels rain and is easy to clean, interior liner, heavy-duty 2-pull zipper and a front zip pocket to carry pics or replacement strings. Use either the 2 carrying handles or the removable padded backpack-style straps to carry your guitar with ease.

A. GBB4550
12477 / Bass

Length: 48"
Lower Bout: 16"
Upper Bout: 15"
Depth: 1"

B. GBE4550
12548 / Electric

Length: 43"
Lower Bout: 16"
Upper Bout: 15"
Depth: 1"

C. GBC4550
12478 / Classical

Length: 42"
Lower Bout: 17"
Upper Bout: 13"
Depth: 4.75"

D. GBA4550
12476 / Acoustic

Length: 44"
Lower Bout: 18"
Upper Bout: 14.5"
Depth: 5"

4770 Series Deluxe Guitar Gig Bags

Each model combines the protection of a half inch foam-lined interior with the portability of a canvas bag. Features include 2 exterior accessories pockets with leather accent strips, heavy duty 2-pull zippers, a padded side carry handle, a padded top carry handle, adjustable backpack straps, an ID tag, and 2 bag hanger loops. Gray piping and an embroidered emblem add to the upgraded styling of these gig bags.

A. GBB4770
12421 / Bass
Length: 48.03"
Depth: 2.95"
Lower Bout: 14.37"
Upper Bout: 13"
Neck Width: 6.69"

B. GBC4770
13341 / Classical
Length: 40.35"
Depth: 3.94"
Lower Bout: 15.35"
Upper Bout: 12.2"
Neck Width: 5.91"

C. GBA4770
12418 / Acoustic
Length: 42.32"
Depth: 3.94"
Lower Bout: 16.73"
Upper Bout: 12.2"
Neck Width: 6.1"

D. GBE4770
12416 / Electric
Length: 38.97"
Depth: 2.76"
Lower Bout: 14.37"
Upper Bout: 12.6"
Neck Width: 6.49"



WARNING
This product can expose you to chemicals including Bis(2-ethylhexyl) phthalate, which is known to the State of California to cause cancer, and birth defects or other reproductive harm. For more information go to www.P65Warnings.ca.gov

Hardshell Cases for Acoustic & Classical Guitar

These hardshell guitar cases provide protection and ease of transportation. Constructed from quality materials, the interior is custom molded and provides full neck support. The interior also features a soft plush lining and an accessories compartment, perfect for picks and capos.

A. GCC5000B
12462 / Classical
Length: 42.1"
Depth: 5.9"
Lower Bout: 16.9"
Upper Bout: 13.8"
Neck Width: 5.5"
Headstock Width: 6.8"

B. GCA5500B
12449 / Shallow-Body Acoustic
Length: 42.52"
Depth: 4.33"
Lower Bout: 17.6"
Upper Bout: 13.78"
Neck Width: 5.91"
Headstock Width: 6.3"

C. GCA5000B
10669 / Acoustic
Length: 45.47"
Depth: 6.3"
Lower Bout: 18"
Upper Bout: 14.75"
Neck Width: 6"
Headstock Width: 7.24"

D. GCA5600B
10113 / Jumbo Acoustic
Length: 44"
Depth: 6"
Lower Bout: 19"
Upper Bout: 14"
Neck Width: 5.5"
Headstock Width: 6"



Hardshell Cases for Electric Guitar

These hardshell guitar cases provide protection and ease of transportation. Constructed from quality materials, the interior is custom molded and provides full neck support. The interior also features a soft plush lining and an accessories compartment, perfect for picks and capos.

WARNING
This product can expose you to chemicals including Bis(2-ethylhexyl) phthalate, which is known to the State of California to cause cancer, and birth defects or other reproductive harm. For more information go to www.P65Warnings.ca.gov

A. GCES7000
10114 / Semi-Hollow / Hollow Body
Length: 43"
Depth: 4.5"
Lower Bout: 18"
Upper Bout: 14"
Neck Width: 5"
Headstock Width: 5"

B. GCLP7000
11089 / Single Cutaway
Length: 41.34"
Depth: 4.8"
Lower Bout: 14.96"
Middle: 9.65"
Upper Bout: 11.22"
Neck Width: 6.3"

C. GCSG7000
11094 / Double Cutaway
Length: 42"
Depth: 5"
Lower Bout: 15.75"
Middle: 12.25"
Upper Bout: 13"
Neck Width: 5"
Headstock Width: 6.25"



WARNING
This product can expose you to chemicals including Bis(2-ethylhexyl) phthalate, which is known to the State of California to cause cancer, and birth defects or other reproductive harm. For more information go to www.P65Warnings.ca.gov

Hardshell Cases for Electric Guitar

These hardshell guitar cases provide protection and ease of transportation. Constructed from quality materials, the interior is custom molded and provides full neck support. The interior also features a soft plush lining and an accessories compartment, perfect for picks and capos.

D. GCE6000T
12460 / Electric / Tweed
Exterior Length: 42.5"
Interior Length: 41.7"
Depth: 4"
Exterior Width: 14.6"
Interior Width: 12.8"

E. GCE6000B
12459 / Electric / Black
Exterior Length: 42.5"
Interior Length: 41.7"
Depth: 4"
Exterior Width: 14.6"
Interior Width: 12.8"

F. GCB6000B
12453 / Bass / Black
Exterior Length: 48"
Interior Length: 45.83"
Depth: 4.5"
Exterior Width: 15.2"
Interior Width: 13.46"

G. GCFV7000
11096 / Flying-V / Black
Exterior Length: 49"
Interior Length: 48"
Depth: 4.5"
Exterior Width: 20"
Interior Width: 19"

Polyfoam Cases for Guitar & Banjo

This heavy-duty polyfoam acoustic guitar case features a plush-lined interior and heavy-gauge 2-pull zipper, allowing the case to be unzipped length-wise from the center. 2 carrying handles and an adjustable shoulder strap make for easy, well-balanced transportation. An integrated compartment is perfect for picks, replacement strings, and other accessories.

A. GPCA5550B
12444 / Acoustic
Dimensions: 43.5" (L) x 17.2" (W) x6" (D)

B. BNC5550B
10155 / Banjo
Dimensions: 17" (W) x 9" (H) x 44" (L) x 7.5" (W)

C. GPCC5550B
12443 / Classical
Dimensions: 43.5" (L) x 17.32" (W) x 6.3" (D)

D. GPCE5550
12446 / Electric
Dimensions: 40.6" (L) x 14.6" (W) x 4.3" (D)

E. GPCB5550
12447 / Bass
Dimensions: 49.25" (L) x 15.35" (W) x 5" (D)



Gig Bags for Ukulele

This line of durable and affordable gig bags designed to hold and transport the your new uke. These lightweight bags were designed for easier mobility; bag can be carried using the padded carry handle or adjustable / removable backpack straps. All bags features a 7mm foamed-lined interior, 2 exterior accessories pockets and a top bag hanger.

A. GBU4101
12424 / Baritone
Dimensions: 10" (W) x 32" (H) x 3.5" (D)

B. GBU4102
12423 / Tenor
Dimensions: 9.25" (W) x 27" (H) x 3" (D)

C. GBU4104
12422 / Concert
Dimensions: 8.25" (W) x 26.5" (H) x 2.75" (D)

D. GBU4103
12420 / Soprano
Dimensions: 7.25" (W) x 22" (H) x 2" (D)



Hardshell Cases for Ukulele

Little instruments need protection too. These cases are sized to perfectly fit ukuleles. Your uke deserves the protection of a hardshell case. Black exterior and interior.

WARNING
This product can expose you to chemicals including Bis(2-ethylhexyl) phthalate, which is known to the State of California to cause cancer, and birth defects or other reproductive harm. For more information go to www.P65Warnings.ca.gov

A. GCU4003
11100 / Soprano

Length: 22"
Depth: 2"
Lower Bout: 7.25"
Upper Bout: 6"
Neck Width: 2"
Headstock Width: 2.5"

B. GCU4004
11097 / Concert

Length: 25"
Depth: 2.5"
Lower Bout: 8.25"
Upper Bout: 7"
Neck Width: 2.25"
Headstock Width: 2.75"

C. GCU4002
11099 / Tenor

Length: 27"
Depth: 3"
Lower Bout: 9.25"
Upper Bout: 8"
Neck Width: 2.5"
Headstock Width: 3"

D. GCU4001
11098 / Baritone

Length: 32"
Depth: 3.5"
Lower Bout: 10"
Upper Bout: 9"
Neck Width: 2.75"
Headstock Width: 3.25"



Gig Bags for Ukulele

On-Stage Ukulele Gig Bags offer a unique and uniquely affordable combination of functionality, fashion and convenience. Constructed with heavy duty, water-repellent, easily-cleaned nylon and thick, double-stitched, woven Padding, they ensure unparalleled gear protection. Together with backpack style straps and an Exterior, easily-accessed accessory pocket, they also provide the ultimate in smooth, effortless transportation and set-up.

A. GBU4204WM
13896 / Concert
Dimensions: 27.5" (L) x 11" (W)
Color: Watermelon

B. GBU4203WM
13895 / Soprano
Dimensions: 24" (L) x 10.5" (W)
Color: Watermelon

C. GBU4204B
13898 / Concert
Dimensions: 27.5" (L) x 11" (W)
Color: Black

D. GBU4203B
13897 / Soprano
Dimensions: 24" (L) x 10.5" (W)
Color: Black

E. GBU4204PA
13893 / Concert
Dimensions: 27.5" (L) x 11" (W)
Color: Pineapple

F. GBU4203PA
13892 / Soprano
Dimensions: 24" (L) x 10.5" (W)
Color: Pineapple



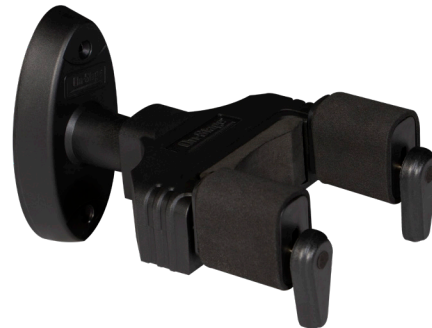
Five Guitar Hanger
GS8500B
12990
Application: Holds 5 guitars
Construction: Anodized aluminum
Hangers (5): (L)14.5", swivel 45° right and left
Includes: 8 Mounting screws
Dimensions: 48" x 4.5"
Color: Black



Straight Slat Wall Guitar Hanger
GS7650SB
10711
Application: Holds 1 guitar
Padding: EVA rubber
Construction: Steel
Position: Straight
Weight Capacity: 11 lbs.
Color: Black



Adjustable Slat Wall Guitar Hanger
GS7650AB
10747
Application: Holds 1 guitar
Padding: EVA rubber
Construction: Steel
Position: Adjustable (left / straight / right)
Weight Capacity: 11 lbs.
Color: Black



Locking Guitar Hanger
GS8130
14026
Application: Holds 1 guitar
Weight Capacity: 16.5 lbs.
Material: Nylon
Includes: Mounting hardware
Color: Black



U-Mount® Shaft Guitar Hanger
GS7800
10648
Application: Holds 1 guitar
Construction: Steel, EVA rubber
Weight Capacity: 8 lbs.
Clamp Size: Adjustable up to 3/4"
Includes: U-Mount® guitar hanger, EVA stand bumper, and zip tie



Adjustable Flip-It® Guitar Hanger®
GS7660B
10706
Application: Holds 1 guitar
Padding: EVA rubber
Construction: Steel
Position: Adjustable (45° left/straight/45°, 90° right)
Weight Capacity: 11 lbs.
Color: Black



Round Metal Wall Guitar Hanger
GS7640
11994
Application: Holds 1 guitar
Padding: EVA rubber
Construction: Steel
Color: Black



Mini Wood Wall Guitar Hanger
GS7730
12035
Application: Holds 1 guitar
Padding: EVA rubber
Construction: Steel and wood
Color: Black / maple



Guitar Hanger for DT8500 Guitar Throne
GS7710
12669
Application: Holds 1 guitar when attached to the DT8500
Construction: Steel
Padding: EVA rubber
Includes: Guitar hanger and positioning washer
Weight Capacity: 12 lbs.
Threading: M10



Guitar Hanger for M20 Bases
GPA7155
13510
Application: Holds 1 guitar when attached to an M20 base
Height Adj: 24" - 38"
Padding: EVA rubber
Threading: M20
Color: Black



● ●
Guitar/Keyboard Pedal Board with Gig Bag
GPB4000
12814

Application: Holds up to 20 standard size guitar pedals, modular synths, laptops, DI boxes, small mixers, drum machines
Construction: Aluminum
Tray Dimensions: 28" (L) x 14.5" (W)
Slot Dimensions: 10-7/8" (L) x 0.75" (W)
Bag Dimensions: 30.5" (L) x 16.5" (W) x 5" (H)
Includes: Gig bag and adhesive hook & loop strips



●
Pedal Board with Gig Bag
GPB3000
11733

Application: Holds up to 10 standard size guitar pedals
Construction: Aluminum
Dimensions: 18.7" (L) x 9" (W)
Bag Material: Nylon
Bag Dimensions: 21.5" (L) x 12.5" (W) x 4.5" (H)
Includes: Gig bag and adhesive hook & loop strips



● ●
Compact Pedal Board with Gig Bag
GPB2000
12943

Application: Holds up to 5 standard size guitar pedals
Construction: Aluminum
Includes: Gig bag and adhesive hook & loop strips
Dimensions: 18.75" (L) x 6" (W)
Color: Black



Harmonica Holder
IHH1020
12913

Application: Holds 10 - 20 hole harmonicas
Construction: Metal
Color: Silver



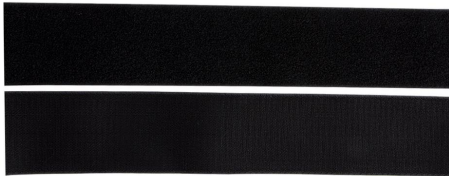
Guitar Humidifier
GA150
13432

Application: Acoustic guitar
Material: Plastic
Color: Black



Ukulele Humidifier
GA250
13431

Application: Ukulele
Material: Plastic
Color: Black



Hook & Loop
HL4000
12976

Application: Securing pedals, mixers, drum machines and more
Quantity: 2 Strips
Dimensions: 41.5" (L) x 3" (W) (each)
Color: Black



Pedal Power Pack
PS801
12935

Application: Powers up to 8 effect pedals
Plug Size: 5.5 / 2.1mm
Includes: Adapter, 8-plug daisy chain, (2) 9V battery connectors, (1) Line 6 connector, (1) 3.5mm connector, (1) reverse polarity connector



8-Plug Daisy Chain
PSA800
12936

Application: Powers up to 8 effect pedals when used with power adapter (sold separately)
Wire Length: 3.5" per plug
Plug Size: 5.5 / 2.1mm
Color: Black



Guitar Capo
GA100
10139

Classical Guitar Capo
GA300
10253

GA100 Application: Guitar
GA300 Application: Classical guitar
Material: Diecast zinc alloy
Padding: Silicone
Color: Black



Ukulele Capo
GA200
10152

Application: Ukulele
Material: Diecast zinc alloy
Padding: Silicone
Color: Silver



Guitar String Winder
GSW500
10580

Application: Guitar or small folk instrument
Construction: Plastic
Color: Black



Guitar String Winder P.O.P. Pack
GSW500PK
11480
GSW500PKRF
11687 / Refill Pack
Application: Guitar or small folk instrument
Construction: Plastic
Quantity: 45
Color: Black



Universal Guitar Care Kit
GK7000
10591
Application: Guitar
Cloth Quantity: 2
Cloth Size: 7.75" x 7.75"
Polish Size: 4 oz.
Guitar Pick Qty: 3
Guitar Pick Size: 0.46mm x 0.71mm x 0.96mm



Jar of 100 Pick Holders
GSAPK6500
12689
Application: Holds up to 5 medium weight picks
Material: Molded plastic with adhesive backing
Quantity: 100
Color: Black



Nylon Guitar Strap
GSA20BKSB
13477
Application: Guitar strap
Material: Nylon, leather ends
Length Adjustment: 32" - 55"
Color: Black



Polypropylene Guitar Strap
Application: Guitar strap
Material: Polypropylene, leather ends
Length Adjustment: 31" - 52"

GSA10GR / 49746 / Grey
GSA10BK / 50204 / Black
GSA10WT / 48644 / White
GSA10BR / 49745 / Brown
GSA10YW / 48634 / Yellow
GSA10BL / 49742 / Blue
GSA10GE / 49743 / Green
GSA10BU / 49741 / Burgundy
GSA10RD / 48635 / Red
GSA10OR / 49744 / Orange
GSA10BLBST / 49740 / Blueburst
GSA10YWBST / 48636 / Sunburst
GSA10KBRD / 48644 / Black with Red Stripes



Ukulele Strap with Clip Connectors
Application: Ukulele strap
Material: Nylon, plastic

GSA70B / 13032 / Black
GSA70R / 13034 / Red
GSA70BL / 13035 / Blue
GSA70 / 13033 / Must be purchased in sub-pack qty (6)



Guitar Pick Holder
GSAPK6600
12688

Application: Holds up to 7 guitar picks
Material: Rubber
Length: 7"
Includes: 6 Guitar picks
Color: Black, purple picks



Microphone Stand Pick Hold-It
GSAPK6700
12690

Application: Holds up to 7 guitar picks
Material: Rubber
Length: 7"
Includes: 5 Picks (heavy)
Color: Black



Felt Ukulele Picks
UPK300
12979

Application: Ukulele, bass, and other stringed instruments
Quantity: 3 Picks
Dimensions: 25mm x 30mm
Colors: White, blue, purple



Click-It Guitar Strap
GSA6230
13478
Application: Guitar strap
Material: Nylon, plastic
Length Adjustment: 46" - 72"
Color: Black



Hennessey® Strap Locks

Application: Locks guitar strap
Construction: Solid brass

7200-Series Strap Locks

NSL7200B / 49756 / Black
NSL7200G / 49782 / Gold
NSL7200C / 49768 / Chrome



Mini Pedal Tuner

GTP7000
13315

Application: Guitar pedal tuner
Tuning Mode: Chromatic
Display: 4-Color
Power: 9V DC (power supply not included)
Dimensions: 3.6" (L) x 1.5" (W) x 1.2" (D)



Clip-On Chromatic Tuner with Metronome

GTA5000
12480

Application: Chromatic tuner with guitar, bass, ukulele, and violin modes
Display: 2-Color
Rotation: 360°
Display Dimensions: 1.73" (H) x 1.32" (W)
Includes: CR2032 battery, instructions



Clip-On Chromatic Tuner with Multi-Instrument Modes

GTA4000
12481

Application: Chromatic tuner with guitar, bass, ukulele, and violin modes
Display: 2-Color
Rotation: 360°
Display Dimensions: 1.73" (H) x 1.32" (W)
Includes: CR2032 battery, instructions



Rechargeable Clip-On Tuner

GTA4500
13226

Application: Chromatic tuner with guitar, bass, ukulele, and violin modes
Display: 4-Color
Rotation: 360°
Battery Life: 5.5 Hours
Power Supply: 3.7V / 110mAh (included)
Dimensions: 1.3" (L) x 1.2" (W) x 3.7" (D)
Includes: USB charging cable, instructions



Tune-Up Clip-On Guitar Tuner

GTA6000
10103

Application: Chromatic tuner with guitar, bass, ukulele, and violin modes
Display: 3-Color
Rotation: 360°
Dimensions: 1.75" (L) x 1" (H) x 0.5" (D)
Color: Red



Wireless Transmitter Pouch with Guitar Strap

MA1335
12997

Application: Attaches wireless transmitters to strap or belt
Dimensions: Fits 1" (L) x 3" (W) x 3.5" (D) transmitter
Material: Water-resistant neoprene
Large Loop: Fits up to 1.75" belts
Small Loop: Fits up to 3/4"
Strap Length: 32" - 55"
Color: Black



Chromatic Tuner, Metronome, Tone Generator

GTA7000
12417

Application: Chromatic Tuner, Metronome and Tone Generator
Display: 1-Color
Tuning Mode: Chromatic
Rhythm: Multiple rhythm patterns
Dimensions: 4.21" (L) x 3" (H) x 0.65" (D)
Includes: Clip-on mic, (2) AAA batteries, instructions



Mini Headphone Amp for Guitar

GA5000MI
10088

Application: Guitar amplification
Controls: Volume / gain / tone
Battery Life: 8 - 10 Hours
Dimensions: 3.25" (L) x 1.5" (W) x 0.75" (D)
Color: Black

WARNING
This product can expose you to chemicals including Bis(2-ethylhexyl) phthalate, which is known to the State of California to cause cancer, and birth defects or other reproductive harm. For more information go to www.P65Warnings.ca.gov



Foot Stool

FS7850B
12020

Application: Foot rest
Position Adjustments: 5
Color: Black



Guitar/Keyboard Throne

DT8500

12559

Application: Guitar stool
Seat Width: 12"
Height Adjustment: 21.25" - 30.5"
Footrest Height: 14.75"
Base Spread: 16.5"
Weight Capacity: 300 lbs.
Color: Black



Guitarist Stool with Foot Rest

DT7500

12872

Application: Guitar stool / stand
Stool Height: 28"
Stool Width: 9"
Foot Rest Height: 11"
Weight Capacity: 300 lbs.
Color: Black



Chrome-Plated Guitar Slide

SLD206

11070 / Size 6

Size: 6
Inside Diameter: 16.5mm
Outside Diameter: 18.9mm
Length: 55mm
Includes: Storage pouch

SLD209

11073 / Size 9

Size: 9
Inside Diameter: 18.9mm
Outside Diameter: 21.3mm
Length: 55mm
Includes: Storage pouch

SLD209T

11072 / Size 9 Thick

Size: 9
Inside Diameter: 18.9mm
Outside Diameter: 21.3mm
Length: 55mm
Includes: Storage pouch

SLD211

11071 / Size 11

Size: 11
Inside Diameter: 20.6mm
Outside Diameter: 23mm
Length: 55mm
Includes: Storage pouch

Microphone

On-Stage®

Tripod Mic Stand
MS9750
(Page 32)

Heavy-Duty Mic
Stand with 12" Base
MS9212
(Page 35)

Mic Shaft
with Upper Rocker
MSS8310
(Page 55)
Utility Stand
for Pedal Board
GPA1003
(Page 36)

Amp Stand with
Boom Arm
RS7501
(Page 105)



**Tripod Base Mic Stand
MS7700B**
10699
Height: 32" - 61.5"
Base Spread: 23"
Threading: 5/8" - 27
Color: Black



**Upper Rocker-Lug Mic
Stand with Tripod Base
MS8301**
12572
Height: 39" - 63"
Upper Shaft Tilt Range: 40°
Base Spread: 23"
Threading: 5/8" - 27
Color: Black



**Euro Boom Microphone
Stand
MS7701B**
10700 / Black
MS7701C
12813 / Chrome
Height: 32" - 61.5"
Base Spread: 23"
Boom Length: 30"
Threading: 5/8" - 27
Color: Black



**Telescoping Euro Boom
Mic Stand
MS7701TB**
10767
Height: 32" - 61.5"
Base Spread: 23"
Boom Length: 20" - 36"
Threading: 5/8" - 27
Color: Black



Euro Boom Microphone Stand
MS7801W
11081
Height: 37" - 64"
Base Spread: 23"
Boom Length: 31"
Threading: 5/8" - 27
Color: White



Heavy-Duty Tripod Base Mic Stand
MS9700B+
11655
Height: 36" - 64"
Base Spread: 24"
Threading: 5/8" - 27
Construction: Steel and zinc
Color: Black



Heavy-Duty Euro Boom Mic Stand
MS9701B+
11656
Height: 36" - 64"
Base Spread: 24"
Boom Length: 30"
Threading: 5/8" - 27
Construction: Steel and zinc
Color: Black



Heavy-Duty Tele-Boom Mic Stand
MS9701TB+
11657
Height: 36" - 64"
Base Spread: 24"
Boom Length: 19" - 30"
Threading: 5/8" - 27
Construction: Steel and zinc
Color: Black



Tripod Mic Stand with M20 Threaded Base
MS9750
13128
Height: 39" - 69"
Base Spread: 24"
Threading: 5/8" - 27
Base Threading: M20
Construction: Steel and zinc
Color: Black



Microphone Stand Pack
MS7500
11493
Application: Mic stand pack with microphone and cable
Stand Height: 41.5" - 63"
Boom Length: 31.5"
Microphone: Dynamic with cardioid pattern
Microphone Frequency Response: 80Hz-12kHz
Cable: 13' XLR-QTR Hi-Z
Includes: Mic clip and pouch

WARNING
This product can expose you to chemicals including Bis(2-ethylhexyl) phthalate, which is known to the State of California to cause cancer, and birth defects or other reproductive harm. For more information go to www.P65Warnings.ca.gov



Microphone Pack for Kids
MS7515
13560
Application: Mic stand pack with microphone and cable
Stand Height: 26" - 42"
Boom Length: 19.5"
Microphone: Dynamic with cardioid pattern
Microphone Frequency Response: 80Hz-12kHz
Cable: 13' XLR-QTR Hi-Z
Includes: Mic clip and pouch

WARNING
This product can expose you to chemicals including Bis(2-ethylhexyl) phthalate, which is known to the State of California to cause cancer, and birth defects or other reproductive harm. For more information go to www.P65Warnings.ca.gov



Euroboom Mic Stands with Bag

MSP7703 11953 / 3 Pack Height: 32" - 61.5" Base Spread: 23" Boom Length: 30" Threading: 5/8" - 27 Color: Black Bag Dimensions: 38" (L) x 6" (W) x 4" (D) Material: Heavy-duty padded nylon	MSP7706 10679 / 6 Pack Height: 32" - 61.5" Base Spread: 23" Boom Length: 30" Threading: 5/8" - 27 Color: Black Bag Dimensions: 39" (L) x 9.5" (W) x 5" (D) Material: Heavy-duty padded nylon
--	--



Round Base Mic Stand
MS7201B

10691 / Black
MS7201C
10692 / Chrome

MS7201W
12412 / White
Height: 33" - 60"
Base Diameter: 10"
Base Weight: 7 lbs.
Upper Threading: 5/8" - 27



Quik-Release Round Base Mic Stand
MS7201QRB

10693
Height: 34" - 62"
Base Diameter: 10"
Base Weight: 7 lbs.
Upper Threading: 5/8" - 27
Color: Black



Quarter-Turn Round Base Mic Stand
MS7201QTR

10676 / Black
MS7201QTRW
10677 / White
Height: 34" - 60"
Base Diameter: 10"
Base Weight: 6.4 lbs.
Upper Threading: 5/8" - 27
Color: Black



ProGrip Dome Base Mic Stand
MS7255PG

13524
Height: 38" - 61"
Base Diameter: 10"
Base Weight: 9 lbs.
Upper Threading: 5/8" - 27
Color: Black



Stackable Mic Stand
MS7325

10672
Height: 34" - 61"
Base Diameter: 10"
Base Weight: 7 lbs.
Upper Threading: 5/8" - 27
Color: Black



Heavy-Duty Mic Stand with 10" Base
MS9210

11492
Height: 36" - 65"
Base Diameter: 10"
Base Weight: 6 lbs.
Upper Threading: 5/8" - 27
Base Threading: M20
Color: Black



●
**Heavy Duty Mic Stand
with 12" Base**
MS9212
11491
Height: 36" - 65"
Base Diameter: 12"
Base Weight: 10 lbs.
Upper Threading: 5/8" - 27"
Base Threading: M20
Color: Black



●
**Three-Section
Microphone Stand**
MS9312
12996
Height: 39" - 97"
Base Diameter: 12"
Base Weight: 10 lbs.
Upper Threading: 5/8" - 27"
Base Threading: M20
Color: Black



● ●
**Upper Rocker-Lug with
10" Low Profile Base**
MS8310
12570
Height: 36" - 65"
Upper Shaft Tilt Range: 40°
Base Diameter: 10"
Base Weight: 6 lbs.
Upper Threading: 5/8" - 27"
Base Threading: M20
Color: Black



● ●
**Upper Rocker-Lug with
12" Low Profile Base**
MS8312
12569
Height: 41" - 69"
Upper Shaft Tilt Range: 40°
Base Diameter: 12"
Base Weight: 10 lbs.
Upper Threading: 5/8" - 27"
Base Threading: M20
Color: Black



● ●
**Lower Rocker-Lug with
12" Low-Profile Base**
MS8412
12571
Height: 41" - 69"
Lower Shaft Tilt Range: 15°
Base Diameter: 12"
Base Weight: 10 lbs.
Upper Threading: 5/8" - 27"
Base Threading: M20
Color: Black



● ●
**Utility Stand for
Pedal Board**
GPA1003
12868
Height: 41" - 69"
Upper Shaft Tilt Range: 40°
Base Spread: 17.9" x 10.35 designed
to slide under pedal boards
Base Weight: 8 lbs.
Upper Threading: 5/8" - 27"
Base Threading: M20
Color: Black



●
**Hex-Base Quarter-Turn
Threadless Mic Stand**
MS7625B
10697
Height: 33" - 61"
Base Spread: 11.5"
Base Weight: 6 lbs.
Upper Threading: 5/8" - 27"
Color: Black



● ●
**Hex-Base Mic Stand
with M20 Threading**
MS7613
13157
Height: 36" - 65"
Base Diameter: 13.5" (L) x 12" (W) x 1.25" (H)
Base Weight: 13 lbs.
Upper Threading: 5/8" - 27"
Base Threading: M20
Color: Black



●●
Studio Boom
SMS7630B
12980
Height: 42" - 72"
Base Spread: 15"
Base Weight: 16 lbs.
Boom Length: 32.5" - 47"
Threading: 5/8" - 27"
Base Threading: M20
Color: Black



●●
Hex-Base Studio Boom
Microphone Stand
SMS7650
12624
Height: 40" - 82"
Base Spread: 18"
Base Spread with Casters: 24"
Base Weight: 17 lbs.
Boom Length: 43" - 79"
Mini Boom Length: 7"
Threading: 5/8" - 27"
Base Threading: M20
Color: Black



Tripod Studio Boom with 7" Mini Boom Extension
SB9600
12911
Height: 46.5" - 79"
Base Spread: 32 - 48"
Boom Length: 43" - 79"
Mini Boom Length: 7"
Threading: 5/8" - 27"
Color: Black



Studio Boom with 7" Mini Boom Extension/Casters
SB96+
10760
Height: 45" - 76"
Base Spread: 34"
Base Includes: Locking casters
Boom Length: 43" - 79"
Mini Boom Length: 7"
Threading: 5/8" - 27"
Color: Black



Handheld Boom Pole
MBP7000
10754
Application: Telescoping pole for field miking and recording
Threading: 5/8" - 27 male and 3/8" female
Length: 3.1' - 8.1'
Weight: 0.95 lbs
Materials: Aluminum and EVA foam for grip
Color: Black



Drum/Amp Tripod with Boom
MS7411B
12743
Height: 17" - 27"
Boom Length: 19"
Base Spread: 26"
Color: Black



●
Handheld Microphone Boom Pole with Cable
MBP8000
93668
Application: Telescoping pole for field miking and recording
Threading: 5/8" - 27 Male and 3/8"
Length: 35" - 10'
Weight: 2.3 lbs
Materials: Aluminum and EVA grip
Included: Internal coiled cable, padded nylon carry bag
Color: Black



Drum/Amp Tripod with Tele-Boom
MS7411TB
10755
Height: 17" - 27"
Boom Length: 20" - 36"
Base Spread: 26"
Color: Black



Drum/Amp Mic Stand
MS7311B

12649
Height: 18" - 26.5"
Boom Length: 17"
Base Spread: 6.5"
Base Weight: 7 lbs.
Base Threading: M20
Color: Black



Pro Heavy-Duty Kick Drum
Microphone Stand
MS9411TB+

11785
Height: 15" - 24"
Boom Length: 19" - 33"
Base Spread: 19"
Color: Black



Bass Drum/Boom Combo Stand
MS7920B

13230
Height: 8" - 14"
Boom Length: 16"
Base Spread: 4.5" x 7.5"
Color: Black



Desktop Stand with Rocker Lug
DS8200

12920
Application: Desktop miking
Height: 9" - 14.25"
Upper Shaft Tilt Range: 40°
Base Diameter: 6"
Base Weight: 3 lbs.
Color: Black



Posi-Lok Desktop
Microphone Stand
DS300B

12583
Application: Desktop miking
Boom Length: 7"
Base Diameter: 6"
Base Weight: 3 lbs.
Color: Black



Gooseneck Desktop Stand
DS6213

10690
Application: Desktop miking
Max Height: 14"
Base Spread: 5.6" - 6.75"
Base Weight: 2.4 lbs.
Color: Black



Drum/Amp Mic Stand
with Telescoping Boom
MS9409

12999
Height: 9" - 13"
Boom Length: 21.5" - 36"
Base Diameter: 10"
Base Weight: 6 lbs.
Threading: 5/8" - 27" for mic clips or
accessories and M20 at base
Color: Black



Drum/Amp Mic Stand
with Telescoping Boom
MS9417

12998
Height: 17" - 28.5"
Boom Length: 21.5" - 36"
Base Diameter: 10"
Base Weight: 6 lbs.
Threading: 5/8" - 27" for mic clips or accessories
and M20 at base
Color: Black



Desktop Stand with Rocker Lug
DS8100

12919
Application: Desktop miking
Height: 12"
Upper Shaft Tilt Range: 40°
Base Diameter: 6"
Base Weight: 3 lbs.
Color: Black



Tripod Desktop Stand
DS7425

51337
Application: Desktop miking
Height Adjustment: 4.3" - 6.7"
Base Spread: 7.5"
Includes: Mic clip
Color: Black and chrome



Desktop Microphone Stand
DS7100B

12584 / Black
DS7100C
12586 / Chrome
Application: Desktop miking
Height: 4"
Base Diameter: 6"
Base Weight: 2 lbs.
Color: Black or chrome



Desktop Microphone Stand
DS7200B

12463 / Black
DS7200C
12587 / Chrome
Application: Desktop and short height miking
Height: 9" - 13"
Base Diameter: 6"
Base Weight: 2 lbs.
Color: Black or chrome



Quik-Release Desktop Microphone Stand
DS7200QRB

12585
Application: Desktop and short height miking
Height: 9.5" - 16"
Base Diameter: 6"
Base Weight: 2 lbs.
Color: Black



Broadcast Boom Arm
MBS5000

12550
Application: Flexible positioning of mic for broadcast/webcast
Vertical Arm Length: 19.5"
Horizontal Arm Length: 19.5"
Total Reach: 38"
Threading: 5/8" - 27
Weight Capacity: 3.5 lbs.
Included: 10' XLR pre-installed cable
Clamps: C-Clamp and Flange Mount
Color: Black



Professional Studio Boom Arm
MBS7500

12623
Application: Flexible positioning of mic for broadcast/webcast
Vertical Arm Length: 19.5"
Horizontal Arm Length: 19.5"
Total Reach: 38"
Threading: 5/8" - 27
Weight Capacity: 3.5 lbs.
Clamps: C-Clamp and flange mount
Color: Black



Professional Telescoping Mic Boom
MSA9900

13098
Application: Flexibility for miking
Length: 21" - 35"
Max Rotation: 180°
Threading: 5/8" - 27
Construction: All metal
Color: Black



Posi-Lok Combo Boom Arm
MSA7500CB

10759
Application: Flexibility for miking vocals or instruments
Length: 22" main boom with 7" Mini-boom
Max Rotation: 360°
Threading: 5/8" - 27
Color: Black



Platinum Series Tele-Boom Arm
MSA9720TB

11984
Application: Flexibility for miking vocals or instruments
Length: 19" - 30"
Max Rotation: 320°
Threading: 5/8" - 27
Construction: Steel
Color: Black



Microphone Boom
A. MSA7040B

13148
B. MSA7040TB
12567 / Telescoping
Application: Flexibility for miking vocals or instruments
MSA7040B Length: 19.5"
MSA7040TB Length: 19" - 32"
Max Rotation: 320°
Threading: 5/8" - 27
Color: Black



Microphone Boom
A. MSA7020B

12566
B. MSA7020TB
12564 / Telescoping
Application: Flexibility for miking vocals or instruments
MSA7020B Length: 32"
MSA7020TB Length: 32" - 48"
Max Rotation: 320°
Threading: 5/8" - 27
Color: Black



Telescoping Boom with Dual Mic Capability
MSA9800

13057
Application: Flexibility for single or dual miking
Length: 21.5 - 36"
Max Rotation: 320°
Threading: Dual 5/8" - 27
Construction: Steel
Color: Black



Clamp-On Boom Arm
MSA8020

11990
Application: Additional mic stand boom
Boom Length: 19"
Vertical Height: 15"
Max Rotation: 320°
Threading: 5/8" - 27
Color: Black



Counterweight
CW-3

11140 / 3 lb.
CW-6
11141 / 6 lb.
Application: Add to shaft for added balance and stability
Opening: Fits shafts 14mm to 22mm
CW-3 Weight: 3 lbs
CW-6 Weight: 6 lbs
Construction: Solid steel
Color: Black



Posi-Lok Clutch
MSA-9501

13016
Application: Flexibility for miking vocals or instruments
Diameter: 1.75"
Max Rotation: 300°
Threading: 5/8" - 27
Color: Black



7" Posi-Lok Mini Boom

MSA-9502

12655

Application: Flexibility for miking vocals or instruments
Length: 7"
Max Rotation: 300°
Threading: 5/8" - 27
Color: Black



Posi-Lok Tele-Boom

MSA-9505

12659

Application: Flexibility for miking vocals or instruments
Length: 9" - 16"
Max Rotation: 300°
Threading: 5/8" - 27
Color: Black



Posi-Lok Side Mount Mini Boom

MSA-9508

12651

Application: Flexibility for miking vocals or instruments
Length: 7"
Max Rotation: 300°
Threading: 5/8" - 27
Color: Black



Flange Mount

TM02B

12646 / Black

TM02C

12811 / Chrome

Application: Mounts mic clips to flat surfaces
Diameter: 1.75"
Threading: 5/8" - 27
Included: 3 Mounting screws
Color: Black or chrome



Flange Mount

TM08B

11981 / Black

TM08C

11993 / Chrome

Application: Mounts mic clips to flat surfaces
Diameter: 2.3"
Threading: 5/8" - 27
Shock Pad: 3mm
Color: Black or chrome



U-Mount® Desk Flange Mount

UM5006

12056

Application: Mounts U-Mount® posts and accessories to flat surfaces
Diameter: 2.25"
Threading: Female 5/8" - 27
Shock Pad: 3mm
Included: 3 Mounting screws
Color: Black



6" Gooseneck

MSA9030-06B

10673 / Black

MSA9030-06C

12893 / Chrome

Application: Flexibility for 5/8" - 27 applications
Length: 6"
Construction: Interlocking rolled metal
Color: Black or chrome



13" Gooseneck

MSA9030-13B

10674 / Black

MSA9030-13C

12894 / Chrome

Application: Flexibility for 5/8" - 27 applications
Length: 13"
Construction: Interlocking rolled metal
Color: Black or chrome



19" Gooseneck

MSA9030-19B

10675 / Black

MSA9030-19C

12895 / Chrome

Application: Flexibility for 5/8" - 27 applications
Length: 19"
Construction: Interlocking rolled metal
Color: Black or chrome



Table/Stand Microphone Clamp

TM01

52962

Application: Mount for desktop or stand
Clamp: 0.625" - 1.625"
Threading: 5/8" - 27
Color: Black and chrome



Table Top Mic Clamp

TM03

11989

Application: Mounts mic clip to desktop
C-Clamp Accepts: 0.625" - 1.625"
Threading: 5/8" - 27
Color: Black



Mic Extension Attachment Bar

MY550

12021

Application: Additional 5/8" - 27 for second mic stand accessory
Length: 6"
Threading: 5/8" - 27
Color: Black



Stereo Mic Bar

MY500

12645

Application: Microphone bar holds 3 microphone clips or other 5/8" - 27 applications

Tilt: 95 °

Threading: 5/8" - 27

Color: Black



Deluxe Stereo Mic Bar

MY700

12661

Application: Microphone bar holds 6 microphone clips or other 5/8" - 27 applications

Length: 16"

Angle Adj: 0 to 45°

Threading: 5/8" - 27

Color: Black



Quick Release Stereo Mic Bar

MY800

13025

Application: Microphone bar holds up to 6 microphone clips or other 5/8" - 27 applications

Length: 8.875"

Angle Adj: 365°

Threading: 5/8" - 27

Color: Black

UMA7 sold separately



Ceiling Bar for Microphones and Lights

MY900

13848

Application: Ceiling Bar for microphones and lights

Length: 46.5"

Includes: Wood screws for permanent mounting and brackets for ceiling tile mounting

Lug Threading: 5/8" - 27 (4 lugs Included)



Ball-Joint Mic Adapter

MM01

11741

Application: Adds a ball joint with 5/8"-27 male threading to any standard mic stand

Weight Capacity: 6 lbs

Tilt Angle Adjustment: 180°

Rotational Adjustment: 360°

Color: Chrome



Quik-Release Mic Adapter

QK-2B

12639 / Black

QK-2C

12668 / Chrome

Application: Push-button quick release for microphone clips

Threading: 5/8" - 27

Color: Black



Multi-Mic Holder

MSA2700

13394

Application: Holds up to 7 microphones

Dimensions: 6.75" x 7.5"

Threading: 5/8" - 27

Includes: 3/8" adapter

Construction: Aluminum

Color: Black



U-Mount® Multi-Function Mount

MSA8204

12563 / Small

MSA8304

12647 / Large

Application: 4 threaded studs for mic stand accessories

Threading: 5/8" - 27

MSA8204 Clamp: 11mm to 22mm

MSA8304 Clamp: 22mm to 30mm

Color: Black



Dual Mic Amp Bar

MY650

13089

Application: Dual miking for amps

Length: 6"

Height Adjustment: 6" - 12"

Threading: 5/8" - 27

Color: Black and chrome



Professional Quik-Release Mic Adapter

QK-10B

11991

Application: Push button quick release for microphone clips

Threading: 5/8" - 27

Color: Black and chrome



3/8" Male to 5/8" Female Mic Screw Adapter

MA-100

12532 / Chrome

MA-100B

13411 / Black

Application: Convert 5/8" male threads to 3/8"

Color: Black or chrome



5/8" Male to 3/8" Female Mic Screw Adapter

MA-200

12533

Application: Convert 3/8" male threads to 5/8"

Color: Chrome



5/8" Male to 3/8" Female Mic Screw Adapter
MA-300
12534
Application: Convert 3/8" male threads to 5/8"
Qty: 2 per package
Color: Chrome



U-Mount® Female-to-Female Adapter
UM-88
10501
Application: Convert 5/8" - 27 male threading to 5/8" - 27 female threading
Color: Black



U-Mount® Male-to-Male Adapter
UM-99
10486
Application: Convert 5/8" - 27 female threading to 5/8" - 27 male threading
Color: Black



5/8"-27 Female to 1/4" - 20 Adapter
MA-125
12531
Application: Mounts camera to mic stand
Female Threading: 5/8" - 27
Male Threading: 1/4"
Color: Chrome



Unbreakable Dynamic Rubber Mic Clip
MY100
11276
Application: Flexible tapered style mic clip for dynamic microphones
Relaxed Diameter: 23mm - 18mm
Color: Black



Unbreakable Wireless Rubber Mic Clip
MY110
11274
Application: Flexible tapered style mic clip for wireless microphones
Relaxed Diameter: 27mm - 25mm
Expanded Maximum Diameter: 35mm
Color: Black



U-Mount® Pull-Back Release Sleeve
UM-97
10490
Application: Quick release option for TCM series and MY800
Threading: 5/8" - 27
Color: Black



U-Mount® Ball Joint Adapter
UM-01
10082
Application: Mounts TCM series to any 5/8" - 27 male threaded stand or accessory
Tilt Angle Adjustment: 180°
Rotational Adjustment: 360°
Color: Black nickel



Video Camera/Digital Recorder Adapter
CM01
12037
Application: Mounts camera to a mic stand
Female Threading: 5/8" - 27
Male Threading: 1/4" - 20
Pan Adjustment: 360°
Tilt Angle Adjustment: 180°
Weight: 0.3 lbs.



Unbreakable Rubber Condenser Mic Clip
MY120
12981
Application: Flexible mic clip for condenser microphones
Relaxed Diameter: 18mm
Expanded Maximum Diameter: 22mm
Color: Black



Clothespin-Style Plastic Mic Clip
MY200
11267
Application: Clothespin mic clip for microphones
Relaxed Diameter: 13mm
Expanded Maximum Diameter: 37mm
Color: Black



Euro-Style Plastic Mic Clip
MY250
11279
Application: Plastic mic clip for dynamic microphones
Diameter: 25mm
Color: Black



Elliptical Mic Clip

MY251

12495

Application: For dynamic microphones
Diameter: 25mm
Color: Black



Condenser Shock-Mount Mic Clip

MY320

11278

Application: Shock absorbent mic clip for condenser microphones
Diameter: 20mm
Color: Black



Dynamic Shock-Mount Mic Clip

MY325

11277

Application: Shock absorbent mic clip for dynamic microphones
Diameter: 25mm
Color: Black



Shock Mount for Studio Microphones

MY420

48574

Application: Prevents vibration when miking
Diameter: Handles 19mm - 30mm
Threading: 5/8" - 27
Color: Black



Shock Mount for Studio Microphones

MY430

12679

Application: Prevents vibration when miking
Diameter: Handles 55mm - 60mm
Threading: 5/8" - 27
Color: Champagne



Pop Blocker

ASVS6-B

12493

ASVS4-B
12492
Application: Improves vocal recordings
ASVS4-B Diameter: 4"
ASVS6-B Diameter: 6"
Clamp: Clothespin Style
Construction: Nylon screen
Color: Black



Wireless Shock-Mount Clip

MY330

11284

Application: Shock absorbent mic clip for wireless microphones
Diameter: 30mm
Color: Black



Music Stand Mic Clip

MY101

53694

Application: Mic clip for conductor stands
Mounting: 2 wingnuts
Color: Black



Shock Mount for Studio Microphones

MY410B

12541 / Black

MY410CG

12542 / Champagne

Application: Prevents vibration when miking
Diameter: Handles 42mm - 48mm
Threading: 5/8" - 27
Color: Black or champagne



Pop Blocker with Clamp & Gooseneck

ASVS6-GB

12510

Application: Improves vocal recordings
Diameter: 6"
Clamp: C-Clamp with 13" gooseneck
Construction: Nylon screen
Color: Black



Dual-Screen Pop Blocker

ASFSS6-GB

13042

Application: Improves vocal recordings
Diameter: 6"
Clamp: C-Clamp with 11.5" gooseneck
Construction: Dual nylon screens
Color: Black



Pop Blocker with Replacement Liners

ASVSR6GB

12822

Application: Improves vocal recordings
Diameter: 6"
Clamp: C-Clamp with 12" gooseneck
Construction: Replaceable nylon screens
Color: Black



Pop Blocker Filters for ASVSR6GB ASVS6R3
12821

Application: Replacement filters for ASVSR6GB
Diameter: 6"
Construction: Nylon screen
Color: Black



Windscreens for Headset Microphones ASWS20N10
13869

Application: Reduce wind, breath, and popping noises
Size: Fits most standard headset mics
Material: Flexible foam
Color: Tan



Windscreen for Pencil Microphones ASWS40B
13870

Application: Reduce wind, breath, and popping noises
Size: Fits most standard pencil mics
Material: Flexible foam
Color: Black



Steel Mesh Mic Grille SP58B
12553 / Black

SP58C
12552 / Chrome
Application: Replacement mic grille
Internal Material: Acoustic foam
Outer Material: Steel wire mesh
Fits: Standard dynamic microphones
Color: Black or chrome



Microphone Bag for Microphones and Accessories MB7006
13889

Application: Holds 6 standard or wireless handheld microphones
Dimensions: 15" (L) x 11.5" (W) x 10" (H)
Materials: Nylon and foam
Color: Black



Wireless Transmitter Pouch with Guitar Strap MA1335
12997

Application: Attaches Wireless transmitters to strap or belt
Dimensions: Fits 1" (W) x 3" (L) x 3.5" (D) transmitter
Material: Water-resistant neoprene
Large Loop: Fits up to 1.75" belts
Small Loop: Fits up to 3/4"
Strap Length: 32" - 55"
Color: Black



Black Windscreen Pack ASWS58B5
12519 / 5 Pack

ASWS58B9
12511 / 9 Pack
Application: Reduce wind, breath, and popping noises
Size: Fits most standard handheld mics
Material: Flexible foam
Color: Black



Color Windscreen Pack ASWS58C5
12528 / 5 Pack

ASWS58C9
12088 / 9 Pack
Application: Reduce wind, breath, and popping noises
Size: Fits most standard handheld mics
Material: Flexible foam
Color: Various



Foam Windscreen ASWS58-B
12090 / Black

ASWS58-BL
12091 / Blue
ASWS58-R
12092 / Red

Application: Reduce wind, breath, and popping noises
Size: Fits most standard handheld mics
Material: Flexible foam



Tripod Microphone Stand Bag MSB6000
13312

Application: Holds 6 tripod mic stands with booms
Dimensions: 39" (L) x 9.5" (W) x 5" (H)
Materials: Nylon
Color: Black



Mic Stand Bag MSB-6500
11292

Application: Holds 3 round/hex base mic stands with shafts and booms
Dimensions: 37" (L) x 12.5" (W) x 3.75" (H)
Materials: Nylon
Color: Black



Clamp-On Accessories Holder MY570
12029

Application: Holds studio headphones, cables, and other small instruments
Dimensions: 3" (L) x 3.5" (W)
C-Clamp: 0.5" - 1"
Color: Black



Clamp On Cup Holder
MSA5050
13402

Application: Cup holder attachment
Dimensions: 3" (W) x 3.25" (H)
Clamp: Fits tubing 3/8" - 1"
Material: Neoprene
Color: Black



U-Mount® Mic Stand Tray
MST1000
10666

Application: Holds small accessories, devices, and additional mics
Tray Dimensions: 6" x 9"
Mounting Bar Length: 9"; 8" Mounted from stand
Threading: 5/8" - 27
Mount: Accepts round tubing to 0.75"
Material: Steel
Color: Black



Laptop Mount
MSA5000
10771

Application: Device tray connects to mic stand
Included: Two 7" self stick non-slip strips
Width Adjustment: 14" - 16.5"
Depth: 10"
Weight Capacity: 12 lbs.
Threading: 5/8" - 27
Color: Black



U-Mount® Clamp-On Bookplate
MSA7011
11703

Application: Sheet music attachment for mic stand
Bookplate Dimensions: 12 1/4" x 10 5/8" with 1" lip
Clamp: Accepts tubing to 3/4"
Mounting Bar Length: 9"; 8" Mounted from stand
Material: Steel
Color: Black



Platform for Mic Stand
MSA6000
13509

Application: Converts mic stand into monitor stand
Dimensions: 9" square
Threading: 5/8" - 27
Weight Capacity: 12 lbs.
Weight: 2 lbs.
Color: Black



Speaker Adapter for Mic Stands
MSA1.375
13415

Application: Converts mic stand into small speaker stand
Threading: 5/8" - 27
Length: 3 1/4"
Diameter: 1 3/8"
Max Weight Capacity: 15 lbs
Weight: 0.3 lbs
Construction: Steel

M20 Threaded Bases & Shafts

Over 50 Combinations. The On-Stage M20 series of modular components — bases, shafts, booms and more — puts the power of stage and studio customization in your hands, right where it belongs. Designed for quick, conveniently reliable adaption, the M20 line features all manner of bases — from tripods for vocals to hexagonal heavyweights for telescoped miking — as well as shafts that accommodate a world of flexible connectivity. Naturally, all feature the precise machining and finest associated steel and aluminum powder-coated metals appropriate for their specific application.

Many Applications:

- Backline Companies
- Schools
- Concert Halls
- Festivals
- Touring Musicians
- Houses of Worship

It's as easy as...



ANY BASE

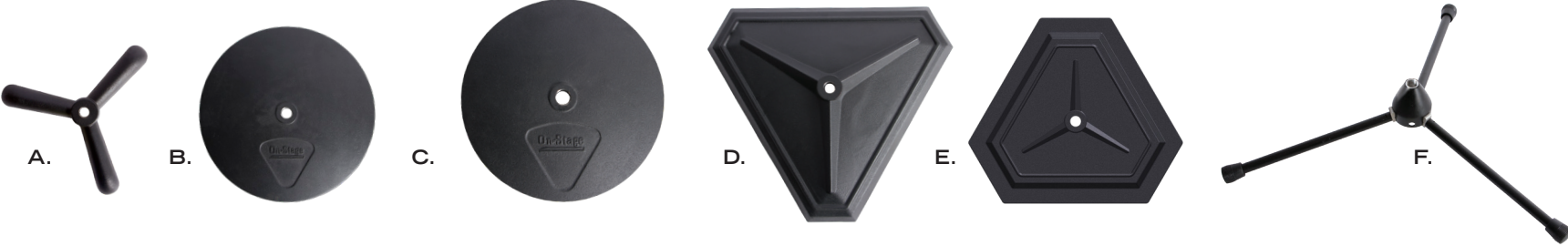


ANY SHAFT



ANY STAND

M20 Bases



A. 5 lb. Sandcast Tripod Base / BA7311 / 13124 **B.** 10" Round Base / BA1006 / 13112 **C.** 12" Round Base / BA1210 / 13123
D. 16 lb. Hex Base / BA1516 / 13125 **E.** 13.25 lb. Hex Base / BA1313 / 13092 **F.** Heavy-Duty Tripod Base / BA9750 / 13154



M20 Shafts

- G. Crank-Up Subwoofer Attachment Shaft / SS7747 / 10738 H. Subwoofer Pole / SS7746 / 11713 I. Guitar Hanger / GPA7155 / 12881
J. 9-13" Mic Stand Shaft / MSS9409 / 13152 K. 17-28.5" Mic Stand Shaft / MSS9417 / 13153 L. Mic Stand Shaft w/ Upper Rocker / MSS8310 / 13127
M. Mic Stand Shaft w/ Upper Rocker / MSS8312 / 13149 N. Mic Stand Shaft w/ Lower Rocker / MSS8412 / 13159
O. 36-65" Mic Stand Shaft / MSS9210 / 13126 P. 36-65" Mic Stand Shaft / MSS9212 / 13151 Q. 39-97" Three Section Shaft / MSS9312 / 13150

Keyboard



Keyboard Accessory Tray
KSA8585
(Page 66)



Double-X Ergo-Lok
Keyboard Stand
with 2nd Tier
KS7292
(Page 60)

Expression Pedal
KEP100
(Page 65)





Single-X Keyboard Stand
with Bolted Construction

KS7190

11057

Application: Small-format keyboards
Height Adjustment: 27" - 38"
Tubing: 1"
Base Spread: 11" - 31"
Arm Depth: 13.25"
Construction: Bolted metal
Weight Capacity: 90 lbs.
Color: Black



Double-X Keyboard Stand
with Welded Attachment

KS7191

11056

Application: Medium-format keyboards
Height Adjustment: 27" - 39"
Tubing: 1"
Base Spread: 11" - 31"
Arm Depth: 13.25"
Construction: Welded metal
Weight Capacity: 120 lbs.
Color: Black

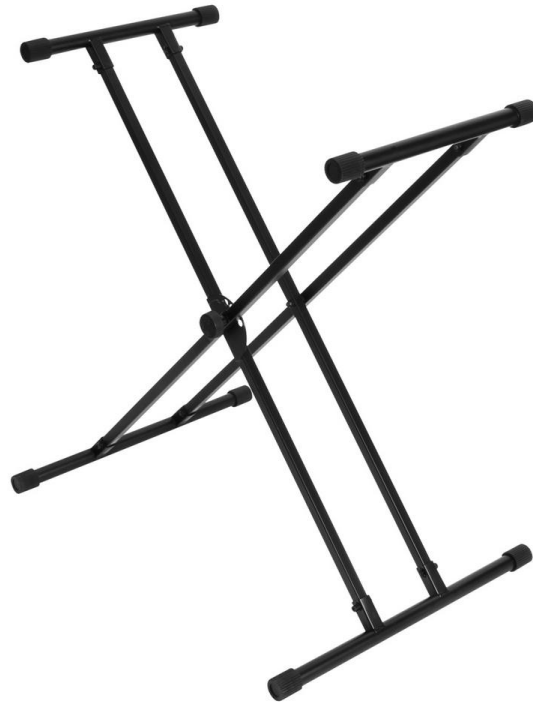


Double-X Keyboard Stand
with Bolted Attachment

KS7171

13528

Application: Medium-format keyboards
Height Adjustment: 27" - 39"
Tubing: 1"
Base Spread: 11" - 31"
Arm Depth: 13.25"
Construction: Bolted metal
Weight Capacity: 120 lbs.
Color: Black



Bullet Nose Keyboard Stand
with Lok-Tight Attachment

KS8191XX

12759

Application: Medium-format keyboards
Tubing: 18mm
Height Adjustment: 27" - 39"
Base Spread: 11" - 31"
Arm Depth: 14"
Construction: Bolted metal
Weight Capacity: 200 lbs.
Color: Black



Ergo-Lok Keyboard Stand
with Welded Attachment

KS7290

12751

Application: Large-format keyboards
Weight Capacity: 275 lbs.
Height Adjustment: 27" - 38"
Base Spread: 12" - 32"
Arm Depth: 13.75"
Tubing: 30mm
Construction: Welded metal
Color: Black



Ergo-Lok Keyboard Stand
with Welded Attachment

KS7291

12750

Application: Large-format keyboards
Weight Capacity: 320 lbs.
Height Adjustment: 27" - 38"
Base Spread: 12" - 32"
Arm Depth: 14.25"
Tubing: 30mm
Construction: Welded metal
Color: Black



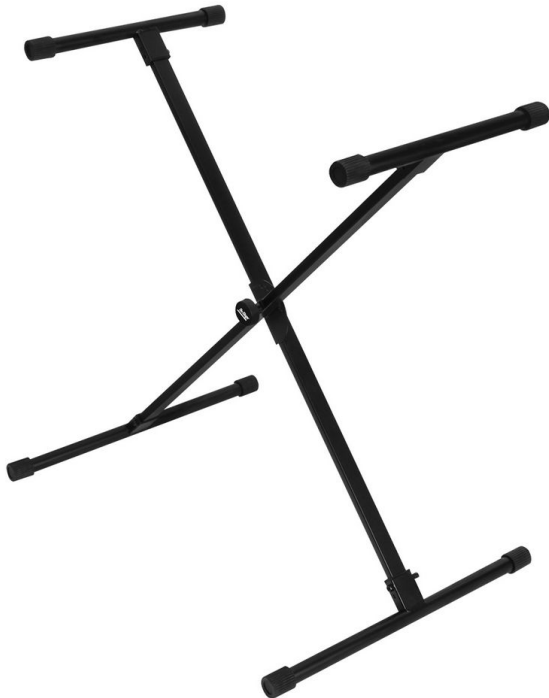
Ergo-Lok Keyboard Stand
with Lok-Tight Attachment
KS8290X
12760

Application: Large-format keyboards
Height Adjustment: 27" - 38"
Base Spread: 12" - 32"
Arm Depth: 13.75"
Tubing: 30mm
Construction: Bolted metal
Weight Capacity: 275 lbs.
Color: Black



Keyboard Stand
with Lok-Tight Attachment
KS8291XX
12761

Application: Large-format keyboards
Height Adjustment: 27" - 38"
Base Spread: 12" - 32"
Arm Depth: 14.125"
Tubing: 30mm
Construction: Bolted metal
Weight Capacity: 320 lbs.
Color: Black



Bullet Nose Keyboard Stand
with Lok-Tight Attachment
KS8190X
12758

Application: Small-format keyboards
Tubing: 15mm x 30mm
Height Adjustment: 27" - 38"
Base Spread: 11 - 31"
Arm Depth: 13.75"
Construction: Bolted metal
Weight Capacity: 100 lbs.
Color: Black



Double-X Ergo-Lok Keyboard
Stand with 2nd Tier
KS7292
13559

Application: Holds 2 keyboards
Weight Capacity: 320 lbs.
Base Spread: 12" - 32"
Height Adjustment (1st tier): 27" - 38"
Lower Arm Depth: 14 1/4"
Upper Arm Depth: 15 1/2"
Color: Black



Folding-Z Keyboard Stand
KS7350
12762

Application: Keyboards, DJ gear, mixers
Structural Tubing: 1" x 2"
Telescoping Width Adjustment (outer): 21" - 36"
Telescoping Width Adjustment (inner): 19" - 34"
Construction: Welded metal
Weight Capacity: 375 lbs.
Color: Black



Folding-Z Keyboard Stand
with 2nd Tier
KS7365EJ
12763

Application: Keyboard, DJ gear, mixers
1st Tier Depth: 16.5"
Width Adjustment: 21" - 36" (outer), 19" - 34" (inner)
2nd Tier Depth: 16.25"
Construction: Welded metal
Structural Tubing: 1" x 2"
Total Weight Capacity: 400 lbs.
2nd Tier Weight Capacity: 60 lbs.
Padding: EVA rubber
Color: Black



3-Tier A-Frame Keyboard Stand
KS7903
11495

Application: Multiple keyboards
Height: 54"
Base Width: 26" x 58" (max required floor space)
Internal Width: 51"
Construction: Bolted metal
Weight Capacity: 40 lbs. per tier (120 lbs. total)
Color: Black



Quantum Core Column Keyboard Stand
KS9102
12051

Application: Holds 2 keyboards
Height Adjustment: 10" - 44"
Base Spread: 32"
Weight Capacity: 125 lbs. per tier (250 lbs. total)
Weight: 17 lbs.
Color: Black



Platform Style Keyboard Stand
KS7150
11650

Application: Large-format keyboard, mixer, and DJ
Height Adjustment: 26" - 43"
Width Adjustment: 29" - 43.5"
Depth: 12.5"
Folded Dimension: 12.625" (W) x 29" (L) x 3.5" (D)
Construction: Welded and bolted metal
Weight Capacity: 230 lbs.
Color: Black



Multi-Function Stand
WS8540
12854

Application: Medium-format keyboards, mixers, racks, DJ coffins and speakers
Tubing: 30mm
Height Adjustment: 24" - 32.5" (8 set positions)
Width Adjustment: 16" - 29"
Depth Adjustment: 14" - 16.5"
Construction: Steel, welded and bolted
Weight Capacity: 300 lbs.
Color: Black



Multi-Function Stand
WS8550
12820

Application: Large-format keyboards, mixers, racks, DJ coffins and speakers
Tubing: 30mm
Height Adjustment: 24" - 33" (8 set positions)"
Width Adjustment: 29" - 47"
Depth Adjustment: 15" - 27"
Construction: Steel, welded and bolted
Weight Capacity: 250 lbs.
Color: Black



Keyboard Stand & Bench Pack
KPK6500
11659

Application: Large-format keyboards, mixers, racks, DJ coffins and speakers
Tubing: 15mm x 30mm
Height Adjustment: 27" - 38"
Width Adjustment: 29" - 47"
Depth Adjustment: 15" - 27"
Construction: Steel, welded and bolted
Weight Capacity: 90 lbs.
Color: Black



Keyboard Stand & Bench Pack
with Keyboard Sustain Pedal

KPK6520
12097

Application: Large-format keyboards, mixers, racks, DJ coffins and speakers
Tubing: 30mm
Height Adjustment: 24" - 33" (8 set positions)"
Width Adjustment: 29" - 47"
Depth Adjustment: 15" - 27"
Construction: Steel, welded and bolted
Weight Capacity: 250 lbs.
Color: Black



Keyboard Stand & Bench Pack
with Keyboard Sustain Pedal

KPK6500
12454

Application: Large-format keyboards, mixers, racks, DJ coffins and speakers
Tubing: 30mm
Height Adjustment: 24" - 33" (8 set positions)"
Width Adjustment: 29" - 47"
Depth Adjustment: 15" - 27"
Construction: Steel, welded and bolted
Weight Capacity: 250 lbs.
Color: Black



Compact Midi/Synthesizer
Utility Stand

KS6150
12509

Application: Mini synths, arrangers, MIDI controllers, effects processors, digital DJ tools, samplers, tablets, laptops, and more
Height Adjustment: 23" - 36"
Tray Width Adjustment: 16" - 29"
Tray Depth: 10"
Platform Angle Adjustment: 0-15°
Base Dimensions: 12" x 16"
Construction: Steel
Weight Capacity: 35 lbs.
Weight: 17.5 lbs.
Color: Black



Universal 2nd Tier
for X-Style Keyboard Stands

KSA7500
11982

Application: Add a 2nd keyboard to your stand
Compatibility: 1" or 30mm round or square tubing
Weight Capacity: 60 lbs.



Professional 2nd Tier
for KS7350 Folding-Z Stand

KSA7550
13024

Application: Add a 2nd keyboard to your stand
Compatibility: KS7350 Folding-Z Stand
Height Adjustment: 9" - 14"
Angle Adjustment: Up to 30°
Weight Capacity: 60 lbs.



Deluxe Universal 2nd Tier
for Keyboard Stands

KSA8000
53972

Application: Multiple keyboards, laptops, small DJ equipment
Compatibility: 1" or 30mm round or square tubing
Support Arm Length: 14"
Height Adjustment: Notches at 12", 13.5" and 15" above keyboard stand.
Width Adjustment: 17.5" - 31"
Weight Capacity: 65 lbs.



Deluxe X-Style Bench

KT7800+
10506

Application: Keyboard bench
Height Adjustment: 19.5" - 24.5"
Bench Seat Size: 12.5" (W) x 23.5" (L)
Cushion Thickness: 3"
Construction: Welded metal
Weight Capacity: 360 lbs.
Color: Black



Deluxe Keyboard Tier

KSA8500
13522

Application: Holds multiple keyboards, mixers, laptops, and other gear when used with keyboard stand with 1" or 30mm, round or square tubing, including On-Stage Z stands
Adjustability: All independent arms are height, angle, depth, and width-adjustable
Weight Capacity: 66 lbs. (33 lbs. per set of arms)
Color: Black



Flip-Top Keyboard/Piano Bench

KB8902B
13532

Construction: Wood / vinyl
Height: 19.5"
Bench Seat: 13.5" (W) x 22.5" (L)
Cushion Thickness: 1.5"
Weight Capacity: 240 lbs.



● **Three-Position X-Style Bench**
KT7800
11483

Height Adjustment: 18.75" - 20.5"
Bench Seat Size: 12"(W) x 17" (L)
Cushion Thickness: 2"
Tubing: 0.75" x 1.5"
Construction: Welded metal
Weight Capacity: 300 lbs.



● **Keyboard/Piano Bench**
KB8802B
13531 / Black

KB8802R
13533 / Rosewood
Construction: Wood / vinyl
Height: 19.5"
Bench Seat: 13.5" (W) x 22.5" (L)
Cushion Thickness: 1.5"
Weight Capacity: 240 lbs.



Height Adjustable Piano Bench
KB9503B
13228

Height Adjustment: 17" - 22"
Weight Capacity: 330 lbs.
Color: Black gloss



Keyboard Sustain Pedal
KSP20
13513

Cord Length: 6'
Connector: 1/4"
Construction: Durable hard outer plastic casing; Medium gauge spring
Dimensions: 2.75" (W) x 1.25" (H) x 3.875" (L)



Power Adapter
OSPA130
13076

Application: Keyboard power supply
Compatibility: Most battery-powered Yamaha keyboards
Input: AC 120V 60Hz
Output: DC 12V 1,000mA
Cord Length: 70"



Utility Tray for X-Style Keyboard Stands
KSA7100
12479

Application: Fits on all On-Stage X-style keyboard stands to hold mixers, laptops, effects, drum machines, and more
Attachment: Brackets adjust to arm spreads between 11.75" - 22.75"
Tray Dimensions: 28" (L) x 14.5" (W)
Weight Capacity: 100 lbs.
Includes: (2) Strips of EVA rubber



Deluxe Keyboard Bench
KB8904B
12515

Construction: Wood / vinyl
Height: 19.5"
Bench Seat: 13.5" (W) x 29.5" (L)
Cushion Thickness: 1"
Weight Capacity: 240 lbs.
Color: Black satin



● **Keyboard Sustain Pedal**
KSP100
13427

Cord Length: 6'
Connector: 1/4"
Foot Pedal: Chrome with removable scratch resistant protective cover, also doubles as a non-slip grip



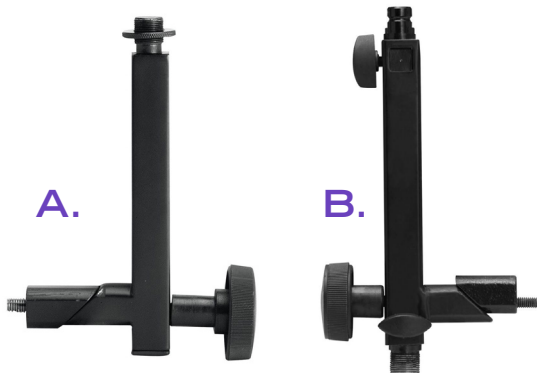
Expression Pedal
KEP100
13147

Application: Expression control, compatible with most keyboards and synthesizers
Dimensions: 8.25" (L) x 3.5" (W) x 2" (D)
Color: Black and grey



Power Adapter
OSADE95
13077

Application: Keyboard power supply
Compatibility: Most Casio keyboards, including CTK, LD, LK models
Input: AC 120V 60Hz
Output: DC 9V 1,000mA
Cord Length: 67"
Plug Type: Right angle



Universal Adapter for Keyboard Mic
A. KSA7575
11983

B. KSA7575+
11735
Application: Add a microphone/tablet mount to keyboard stands
Compatibility: Any keyboard stand with 1" or 30mm, round or square tubing
Support Arm Length: 6.125"
Threading: 5/8" - 27
Weight Capacity: 10 lbs.



● **Keyboard Accessory Tray**
KSA8585
13523

Application: Small mixers, drum machines, synth modules, effects pedals, small speakers
Tray Dimensions: 12" (L) x 8" (W)
Tray Height (from 1st tier): 10"
Tray Rotation Angle: 180°
Includes: (2) Strips of hook and loop



61-Key Keyboard Dust Cover

KDA7061B
13467 / Black

KDA7061G
13468 / Gray

Application: Keyboard protection
Size: 61/76 Key
Material: Spandex



88-Key Keyboard Bag

KBA4088
13400

Application: 88 Key keyboards
Material: Weather resistant nylon
Padding: 3/4" Foam
Transportation: Carrying handle and wheels
Interior Dimensions: 58.5" (L) x 15" (H) x 5.1" (D)
Accessory Pocket: 28" (L) x 12" (H) x 2" (D)



Keyboard Stand Bag

KSB-6500
35539

Application: Holds KS7350, KS7365EJ, and KS7150 keyboard stands
Material: Heavy-duty padded nylon
Dimensions: 30" (L) x 16" (H) x 8.75" (D)



88-Key Keyboard Dust Cover

KDA7088B
13469 / Black

KDA7088G
13470 / Gray

Application: Keyboard protection
Size: 88 Key
Material: Spandex



61-Key Keyboard Bag

KBA4061
13399

Application: 61 Key keyboards
Material: Weather resistant nylon
Padding: 3/4" Foam
Transportation: Backpack style straps and carrying handles
Interior Dimensions: 39" (L) x 12.2" (H) x 4" (D)
Accessory Pocket: 21" (L) x 12" (H) x 2" (D)



49-Key Keyboard Bag

KBA4049
13988

Application: 49 Key keyboards
Material: Weather resistant nylon
Padding: 3/4" Foam
Transportation: Backpack style straps and carrying handles
Interior Dimensions: 35.5" (L) x 12.75" (H) x 5" (D)
Accessory Pocket: 21" (L) x 12" (H) x 2" (D)

Percussion



Percussion Table
DPT5500B
(Page 70)





5-Piece Drum Set

DK7500-GB

52562 / Gloss Black

DK7500-WR

52725 / Wine Red

Bass Drum: 22" (L) x 16" (W) 6 lug

Floor Tom: 16" (L) x 16" (W) 5 lug

Tom Tom: 13" (L) x 11" (W) 5 lug

Tom Tom: 12" (L) x 10" (W) 5 lug

Snare Drum: 14" (L) x 5" (W) 5 lug

Drum Shells: 6-Ply Poplar

WARNING
This product can expose you to chemicals including Bis(2-ethylhexyl) phthalate, which is known to the State of California to cause cancer, and birth defects or other reproductive harm. For more information go to www.P65Warnings.ca.gov



5-Piece Junior Drum Set

DKJ5500-GB

52672 / Gloss Black

DKJ5500-WR

52563 / Wine Red

Bass Drum: 16" (L) x 11" (W); 6 lug

Floor Tom: 13" (L) x 10" (W); 5 lug

Tom Tom: 10" (L) x 7" (W); 5 lug

Tom Tom: 11" (L) x 7" (W); 5 lug

Snare Drum: 12 (L) x 5" (W); 5 lug

Drum Shells: 6-Ply Poplar

WARNING
This product can expose you to chemicals including Bis(2-ethylhexyl) phthalate, which is known to the State of California to cause cancer, and birth defects or other reproductive harm. For more information go to www.P65Warnings.ca.gov



Double-Braced Drum Throne

MDT2

55736

Seat Dimensions: 11" diameter; 2.4" thick

Height Adjustment: 5 Notches adjust from 19.5" - 24.4"

Base Spread: 18.11"

Material: Foam cushion covered in a durable flame retardant leather-textured material; solid steel; rubber feet

Color: Chrome and black



Fixed Snare Cajon

WFC3200

12745

Dimensions: 11 3/4" (W) x 18 7/8" (H) x 11 3/4" (D)

Hole Diameter: 4 1/2"

Material: Birch wood, foam pad, rubber feet

Includes: Gig bag, adjustable snare wire, and removable foam



Bell Kit

BSK2500

13082

Height Adjustment: 25" - 38"

Bag Dimensions: 28.5" (L) x 16" (W) x 5.5" (D)

Includes: 2.5 Octave bell set, tripod stand with sheet music holder, 8" drum practice pad, 5B wood tip drumsticks, double-sided mallets, and carry bag



Drum Practice Pad with Stand & Bag

DFP5500

11758

Height Adjustment: 22" - 37"

Base Spread: 12" - 27"

Diameter: 8"

Angle Adjustment: 80°

Bag Dimensions: 24 1/4" (L) x 12.5" (W)

Bag Material: 600D Nylon cordura



Drum Hardware Bag

DHB6500

10416

Application: Holds up to 8 pcs of drum hardware

Dimensions: 38" (L) x 14" (W) x 10" (H)

Weight Capacity: 100 lbs

Material: Heavy-duty nylon with foam lined interior and vinyl divider

Color: Black

WARNING
This product can expose you to chemicals including Bis(2-ethylhexyl) phthalate, which is known to the State of California to cause cancer, and birth defects or other reproductive harm. For more information go to www.P65Warnings.ca.gov



Non-Slip Drum Mat

DMA4450 / DMA6450

12040 / 12039

DMA4450 Dimensions: 4' (L) x 4' (W)

DMA6450 Dimensions: 6' (L) x 4' (W)

Material: Non-slip PVC

Includes: Nylon carry bag

Color: Black with green accents



Drum Set Dust Cover

DTA1088

13475

Dimensions: 80" (W) x 108" (L)

Material: Waterproof nylon

Color: Black



Wood Cajon Brushes

WCB100

13373

Handle Length: 8.5"

Bristle Length: 6"

Total Length: 14.5"

Material: Maple wood and nylon bristles



Percussion Mallets

WPM100

13890

Application: Percussion mallets

Length: 12.5"



Percussion Table

DPT5500B

13232

Height Adjustment: 27.5" - 40.5"

Angle Adjustment: 0 - 90°

Platform Dimensions: 18.5" (L) x 18.5" (W)

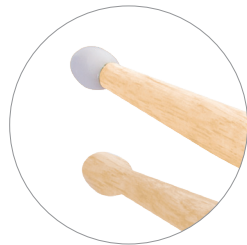
Weight Capacity: 25 lbs

Color: Black



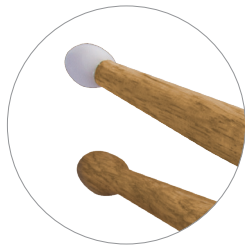
Hickory Drum Sticks

- | Nylon Tip | Wood Tip |
|--|--|
| HN2B
11114
Size: 2B
Quantity: 12pr | HW2B
11119
Size: 2B
Quantity: 12pr |
| HN5A
11101
Size: 5A
Quantity: 12pr | HW5A
11118
Size: 5A
Quantity: 12pr |
| HN5B
11102
Size: 5B
Quantity: 12pr | HW5B
11117
Size: 5B
Quantity: 12pr |
| HN7A
11113
Size: 7A
Quantity: 12pr | HW7A
11116
Size: 7A
Quantity: 12pr |



Maple Drum Sticks

- | Nylon Tip | Wood Tip |
|--|--|
| MN2B
11124
Size: 2B
Quantity: 12pr | MW2B
11134
Size: 2B
Quantity: 12pr |
| MN5A
11123
Size: 5A
Quantity: 12pr | MW5A
11133
Size: 5A
Quantity: 12pr |
| MN5B
11121
Size: 5B
Quantity: 12pr | MW5B
11129
Size: 5B
Quantity: 12pr |
| MN7A
11120
Size: 7A
Quantity: 12pr | MW7A
11135
Size: 7A
Quantity: 12pr |



American Hickory Drum Sticks

- | Nylon Tip | Wood Tip |
|---|---|
| AHN2B
11103
Size: 2B
Quantity: 12pr | AHW2B
11108
Size: 2B
Quantity: 12pr |
| AHN5A
11107
Size: 5A
Quantity: 12pr | AHW5A
11109
Size: 5A
Quantity: 12pr |
| AHN5B
11106
Size: 5B
Quantity: 12pr | AHW5B
11115
Size: 5B
Quantity: 12pr |
| AHN7A
11104
Size: 7A
Quantity: 12pr | AHW7A
11111
Size: 7A
Quantity: 12pr |



Deluxe Cymbal Trolley Bag
CBT4200D
10219

Application: Holds up to 8 cymbals
Dimensions: 28" (L) x 25" (W) x 4.5" (D)
Weight Capacity: 100 lbs
Material: Heavy-duty nylon
Color: Black

WARNING
This product can expose you to chemicals including Bis(2-ethylhexyl) phthalate, which is known to the State of California to cause cancer, and birth defects or other reproductive harm. For more information go to www.P65Warnings.ca.gov



Cymbal Bag
CB3500
14051

Large Pocket Diameter: 23.25" with 3.75" Max opening
Included: 3 Felt Spacers
Material: Heavy-duty nylon
Color: Black



Deluxe Cymbal Bag
CB4000
10122

Large Pocket Diameter: 23.25" with 3.75" Max opening
Small Pocket Diameter: 16.5" with 1.55" Max opening
Included: 3 Felt Spacers
Material: Heavy-duty nylon
Color: Black

WARNING
This product can expose you to chemicals including Bis(2-ethylhexyl) phthalate, which is known to the State of California to cause cancer, and birth defects or other reproductive harm. For more information go to www.P65Warnings.ca.gov



2 Pocket Drum Stick Bag
DSB6500
35534

Dimensions: 17" (L) x 4.5" (W) x 3" (D)
Material: Nylon
Color: Black



3 Pocket Drum Stick Bag
DSB6700
13471

Extended Dimensions: 15.5" (W) x 18.25" (L)
Material: Nylon
Color: Black



Clamp-On Drum Stick Holder
DA-100
12028

Dimensions: 11" long
Diameter Opening: 3 1/4"
Construction: Neoprene material and steel
Color: Black



Standard Padded Drum Bag Set
DPB3000
14054

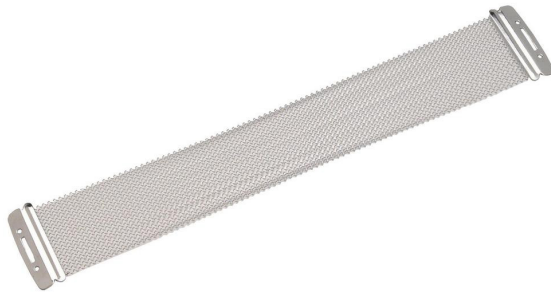
Application: 23.25" with 3.75" Max opening
Five Padded Bags to Fit: 22" x 18" bass, 12" x 10" and 13" x 11" toms, 16" x 16" floor tom, and 14" x 5.5" snare
Material: Heavy-duty nylon exterior with soft, padded interior
Color: Black



Drum Key POP Container
DKA100
12878

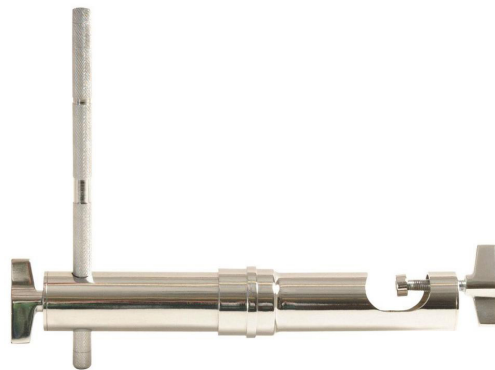
Applications: Fits all 1/4" standard socket square drum key tension rods
Construction: Chrome plated

WARNING
This product can expose you to chemicals including Bis(2-ethylhexyl) phthalate, which is known to the State of California to cause cancer, and birth defects or other reproductive harm. For more information go to www.P65Warnings.ca.gov



20-Strand Replacement Snare Wires
DSW1420
51341

Length: 14"
Coils: Identical medium-gauge coils (0.6mm)
Material: 20-Strand steel wires with chrome-plated end clips



U-Mount® Percussion Mount with Spline Gear
DA-26P
10151

Application: Mounting drum accessories
Length: 10"
Diameter: 1 3/8"
Material: Steel
Color: Chrome

WARNING
This product can expose you to chemicals including Bis(2-ethylhexyl) phthalate, which is known to the State of California to cause cancer, and birth defects or other reproductive harm. For more information go to www.P65Warnings.ca.gov



Drum Rim Microphone Clip
DM01
11980

Application: Drum miking
Threading: 5/8" - 27
Color: Black



Drum Rim Mic Clip
DM50
12939

Application: Drum miking
Threading: 5/8" - 27
Color: Black

Band & Orchestra



Orchestra Music Stand
SM7711B
(Page 75)

Music Stand Cart
SMC5000
(Page 76)



Orchestra Music Stand
SM7711B
12681
Application: Sheet music
Book Plate: 12.5" (L) x 20" (W) with 2" return lip
Construction: Aluminum
Height Adjustment: 26" - 48"
Base Construction: Steel
Base Spread: 19"
Weight Capacity: 8 lbs.
Color: Black



Music Stand with Wide Rosewood Bookplate
SM7312W
11188
Application: Sheet music
Book Plate: 13.5" (L) x 22" (L) with 2" return lip
Height Adjustment: 24" - 45"
Base Spread: 18"
Color: Black with rosewood bookplate



Music Stand with Tripod Base
SM7211B
11192
Application: Sheet music
Book Plate: 13.5" (L) x 19" (W) with 2" return lip
Height Adjustment: 24" - 45"
Color: Black



Music Stand Cart
SMC5000
13987
Application: 8 - 10 Sheet music stands
Footprint: 24.5" (L) x 21.75" (W)
Weight Capacity: 80 lbs.
Color: Black



Detachable Sheet Music Stand (with Bag)
SM7022BB
13047
Detachable Sheet Music Stand
SM7022B
13038
Application: Sheet music
Stand Book Plate: 16.75" (W) x 13" (L) with 1" return lip
Stand Height Adjustment: 26" - 42.75"
Stand Base Spread: 21.5"
Construction: Steel
Bag Dimensions: 23.75" (L) x 6.22" (W)



Compact Sheet Music Stand
SM7122_B
Application: Sheet music
Book Plate: 9" foldable with 2" return lip
Height Adjustment: 26" - 40"
Base Spread: 18" - 21"
Construction: Steel
Includes: Carrying bag

SM7122BB / 10500 / Black with Bag
SM7122B / 12589 / Black (No Bag)
SM7122DBB / 13039 / Dark Blue with Bag
SM7122GRB / 13041 / Green with Bag
SM7122NB / 12588 / Nickel with Bag
SM7122PB / 13045 / Purple with Bag
SM7122PKB / 13044 / Pink with Bag
SM7122RB / 13043 / Red with Bag





○
Tripod Base Sheet Music Stand
SM7222_B

Application: Sheet music
Book Plate: 9" foldable with 2" return lip
Height Adjustment: 20" - 52"
Construction: Steel
Includes: Carrying bag

SM7222BB / 13037 / Black with Bag
SM7222DBB / 13046 / Dark Blue with Bag
SM7222GRB / 13048 / Green with Bag
SM7222PB / 13052 / Purple with Bag
SM7222PKB / 13051 / Pink with Bag
SM7222RB / 13049 / Red with Bag



○
Sheet Music Stand Bag
SMSB-6500
35542

Application: Holds 1 sheet music stand
Material: Canvas
Dimensions: 23.75" (L) x 6.22" (W)
Color: Black



Clip-On LED Light
LED202
81370 / White Light

LED202R
92651 / Red Light
Application: Sheet music stand
Lamp Quantity: 2
LED Qty: 2 (1 per head)
LED202 LED Color: White
LED202R LED Color: Red
Power: (3) AAA batteries



Clip-On Solo LED Light
LED102
10084

Application: Sheet music stand
Lamp Quantity: 1
LED Quantity: 2
LED Color: White
Power: (3) AAA batteries



Clip-On Duo LED Light
LED204
10085

Application: Sheet music stand
Lamp Quantity: 2
LED Quantity: 4 (2 per head)
LED Color: White
Power: (3) AAA batteries



● ●
USB Rechargeable Sheet Music Light
LED2214
13884

Application: Sheet music stand
Lamp Quantity: 1
LED Quantity: 4
LED Color: White / Red
Charging Time: 5 - 6 Hours
Battery Life: 25 Hours



Clip-On LED Orchestra Light
LED510
10468

Application: Sheet music stand
Lamp Quantity: 1
LED Quantity: 10
LED Color: White
Power: AC adapter (included) OR (3) AA batteries
Includes: Carrying bag, AC adapter



●
Dual USB Rechargeable Sheet Music Light
LED2224
13886

Application: Sheet music stand
Lamp Quantity: 2
LED Quantity: 8 (4 per head)
LED Color: White / Red
Battery Style: Lithium-ion
Battery Life: 15 Hours



Alto/Tenor Sax Stand with Flute Peg
SXS7101B
12573

Application: Alto / tenor saxophone, flute, clarinet
Base Spread: 18"
Number of Instruments Held: 2
Color: Black



Double Sax/Flute Stand

SXS7201B

12576

Application: Alto / tenor saxophone, flute, clarinet
Tubing: 7/8" (square)
Base Spread: 21" (W) x 14" (L)
Number of Instruments Held: 4
Color: Black



Baritone Sax Holder

SXSA7201B

72000

Application: Holds baritone saxophone
Height: 25"
Upper Yoke Spread: 5.5"
Color: Black



Tall Alto/Tenor Sax Stand

SXS7401B

12575

Application: Alto / tenor saxophone
Height Adjustment: 36" - 48"
Base Spread: 22"
Number of Instruments Held: 1
Color: Black



Baritone Sax Stand

SXS7501B

12578

Application: Baritone saxophone
Height Adjustment: 26" - 29"
Base Spread: 20"
Number of Instruments Held: 1
Color: Black



Desktop Soprano Sax Stand

DSS7600

11762

Application: Soprano saxophone, microphone
Base Spread: 9"
Material: Steel
Color: Black



French Horn Stand

FHS7201B

13405

Application: French horn
Angle: 20°
Tubing: 1" x 1"
Material: Steel
Color: Black



Trombone Stand

TS7101B

12574

Application: Trombone
Height Adjustment: 29" - 47"
Base Spread: 22"
Number of Instruments Held: 1
Color: Black



Trumpet Stand

TRS7301B

12577

Application: Trumpet
Base Spread: 13"
Number of Instruments Held: 1
Color: Black



Clarinet or Flute Stand
FS7000B
12579
Application: Clarinet / flute
Base Diameter: 6"
Base Construction: Weighted sand-cast metal
Color: Black



Deluxe Foam Padded Strap for Saxophone
SPS5000
12786
Application: Saxophone
Material: Nylon
Color: Black



Violin Hanger for Music Stands
VS7200
12095
Application: Violin
Yoke Opening: 1.1" - 1.3"
Clamp: 7/16" - 3/4"
Weight Capacity: 8 lbs.
Includes: (1) U-Mount® clamp, (1) EVA bumper, (1) EVA bumper zip tie
Color: Black



Trumpet Whisper Mute
TCM7530
50516
Application: Trumpet
Dimensions: 3.5" (W) x 6" (H)
Material: Spun aluminum, natural cork
Color: Silver



Trumpet Wah Wah Mute
TCM7420
50518
Application: Trumpet
Dimensions: 5.5" (W) x 4" (H)
Material: Spun aluminum, natural cork
Color: Silver



Trumpet Straight Mute
TCM7520
50517
Application: Trumpet
Dimensions: 3.5" (W) x 6" (H)
Material: Spun aluminum, natural cork
Color: Silver



Foam Shoulder Pad for Violin/Viola (Small)
VSR1814
13079
Application: Violin, viola
Size: Small
Fits: 1/8 "; 1/4 Size instruments (10" - 11")
Material: Foam
Color: Grey



Foam Shoulder Pad for Violin/Viola (Medium)
VSR1234
13080
Application: Violin, viola
Size: Medium
Fits: 1/2 "; 3/4 Size instruments (12" - 13")
Material: Foam
Color: Grey



Foam Shoulder Pad for Violin/Viola (Large)
VSR3444
13078
Application: Violin, viola
Size: Large
Fits: 3/4 "; 4/4 size instruments (13" - 14")
Material: Foam
Color: Grey



Microfiber Moisture Magnet for Alto Sax
SRS5000
12777
Application: Alto Saxophone



Mouthpiece Brush for Brass Instruments
BMB5600
12776
Application: Brass instrument

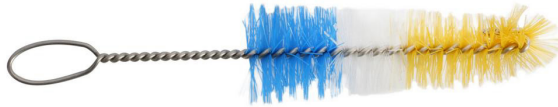


Microfiber Moisture Magnet for Flute
FRS5000
12776
Application: Flute



A. Bore Brush/Swab for Clarinet/Flute
WCS4000
12774

Application: Clarinet, flute
Material: Cotton (head); metal wire (handle)



Mouthpiece Brush for Woodwinds
WMB6600
12770

Application: Woodwind instruments



Microfiber Moisture Magnet for Clarinet
CRS5000
12775

Application:Two moisture magnets, one for each section of the clarinet. Designed to stay in the instrument during storage and transport. Keeps pads dry and clean.



Premium Slide Oil
SOL2000
12768

Application: Trombone
Size: 2 oz.



Premium Valve Oil
VOL2000
12767

Application: Brass instrument
Size: 2 oz.



Peg Compound for Strings
VPG1000
12787

Application: Violin, viola, cello
Size: 1 oz.



Premium Cork Grease
CGS1500
12765 / Single

CGS1500B
12803 / Bulk
Application: Woodwind reed instruments



Premium Multi-Purpose Grease
TSG1000
12766 / Single

TSG1000B
12804 / Bulk
Application: Brass instrument



Magic Mist Mouthpiece Disinfectant and Case Freshener
MHC2000
12783

Application: Brass woodwind instruments
Size: 2 oz.



End Pin Anchor for Bass/Cello
CBS1000
12790

Application: Bass / cello



Name Tag for Band Instruments
IDT1000
12802

Application: Clear economy tag with insert and attaching loop.
Bulk only.



2-Slot Reed Guard
RDG2000
12784

Application: Instrument reeds
Holds: 2 reeds



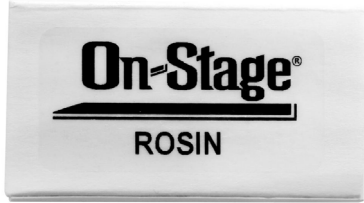
4-Slot Reed Guard
RDG4000
12785

Application: Instrument reeds
Holds: 4 reeds



Super Saver Kit for Cello
CEK5600
12792

Application: Cello
Includes: Large rosin, polishing cloth, magic touch polish, dead stop end pin anchor, instruction pamphlet



Bow Rosin (Large)
BRL1000
12789

Application: Violin, viola, cello
Size: Large



Super Saver Kit for Trombone
TBK5700
12796

Application: Trombone
Includes: Slide oil, lacquer polishing cloth, 42" trombone snake, mouthpiece brush, tuning slide grease, instruction pamphlet



Super Saver Kit for Low Brass
LBK5800
12794

Application: Low brass instruments
Includes: Valve oil, lacquer polishing cloth, 6" brass snake, mouthpiece brush, tuning slide grease, valve brush, water key corks, instruction pamphlet



Super Saver Kit for Alto Sax
SXX5800
12795

Application: Alto Saxophone
Includes: Sax swab, cork grease, duster brush, wire mouthpiece brush, lacquer polishing cloth, reed guard, neck swab, instruction pamphlet



Bow Rosin (Small)
BRA1000
12788

Application: Violin, viola, cello
Size: Small



Super Saver Kit for Clarinet
CLK5600
12791

Application: Clarinet
Includes: Clarinet swab, cork grease, duster brush, wire mouthpiece brush, polishing cloth, reed guard, instruction pamphlet



Super Saver Kit for Flute
FLK5600
12793

Application: Flute
Includes: Duster brush, pad papers, cleaning rod cloths, silver polishing cloths, instruction pamphlet



Super Saver Kit for Viola
VAK5600
12799

Application: Viola
Includes: Rosin, slim softie shoulder rest, polishing cloth, fingerboard markers, magic touch polish, instruction pamphlet



Super Saver Kit for Trumpet
TPK5600
12797

Application: Trumpet
Includes: Valve oil, lacquer polishing cloth, 32" trumpet snake, mouthpiece brush, tuning slide grease, instruction pamphlet



Super Saver Kit for Tenor Sax
TSK5700
12798

Application: Tenor saxophone
Includes: Sax swab, cork grease, duster brush, wire mouthpiece brush, lacquer polishing cloth, reed guard, neck swab, instruction pamphlet



Super Saver Care Kit for Bass Clarinet
BCK5600
13294

Application: Bass clarinet
Includes: Cork grease, key oil, polishing cloth, real chamois clarinet neck swab, rainbow body swab, use and care pamphlet



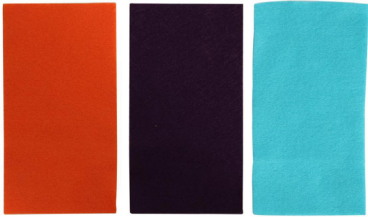
Super Saver Kit for Violin
VNK5600
12800

Application: Violin
Includes: Rosin, slim softie shoulder rest, polishing cloth, fingerboard markers, magic touch polish, instruction pamphlet



Super Saver Care Kit for French Horn
FHK5600
13285

Application: French horn
Includes: Rotor oil, lacquer cloth, synthetic 5ft snake, mouthpiece brush, tuning slide grease, duster brush, replacement rotor strings, use and care pamphlet



Synthetic Swabs for Flute (3-Pack)
FRC3000
12772

Application: Flute
Quantity: 3



Synthetic Clarinet Swab
CRS1000
12771

Application: Clarinet
Material: Synthetic fiber



Synthetic Swab for Alto Sax
SAS2000
12773

Application: Alto saxophone
Material: Synthetic fiber



Super Saver Care Kit for Oboe
OBK5600
13292

Application: Oboe
Includes: Cork grease, duster brush, silver polishing cloth, pad paper, hanky oboe swab, key pil, use and care pamphlet



Super Saver Care Kit for Bassoon
BSK5600
13289

Application: Bassoon
Includes: Key oil, cork grease, duster brush, polishing cloth, cotton bassoon swab, use and care pamphlet



Super Saver Care Kit for Cello
CEK5600
12792

Application: Cello
Includes: Large Rosin, Polishing Cloth, Magic Touch Polish, End Pin Anchor & Floor Protector, and Use/Care Pamphlet

Sur



Microfiber Cloth
MIC1000
12801

Application: Instrument cleaning care
Size: 12" x 12"



Microfiber Swab for Clarinet
CFS3000
12781

Application: Clarinet
Material: Microfiber



Microfiber Swab for Alto Sax
SFS3000
12782

Application: Alto saxophone
Material: Microfiber

Speaker, Lighting & Television

On-Stage®

Speaker Stand
with Adjustable Leg
SS7762B
(Page 91)



All-Steel Speaker Stand

SS7725
12471

Upper Shaft Diameter: 1 3/8" with 1 3/8" to 1 1/2" adapter included
Height Adjustment: 46" - 74"
Weight Capacity: 120 lbs.
Construction: Steel
Color: Black



Classic Speaker Stand

SS7730B
10649

Upper Shaft Diameter: 1 3/8" with 1 3/8" to 1 1/2" adapter included
Height Adjustment: 44" - 80"
Weight Capacity: 160 lbs.
Construction: Steel and aluminum
Color: Black



All-Aluminum Speaker Stand

SS7761B
10650

Upper Shaft Diameter: 1 3/8" or 1 1/2"
Height Adjustment: 45" - 72"
Base Spread: 32" - 48"
Weight Capacity: 120 lbs.
Construction: Aluminum
Color: Black



Speaker Stand with Adjustable Leg

SS7762B

13871

Upper Shaft Diameter: 1 3/8" or 1 1/2"

Length: 45" - 72"

Base Spread: 32" - 48"

Leveling Leg: 0"-8"

Weight Capacity: 110 lbs.

Construction: Aluminum

Color: Black



Air-Lift Speaker Stand

SS7764B

12042

Upper Shaft Diameter: 1 3/8"

Height Adjustment: 47" - 74"

Base Spread: 46"

Weight Capacity: 100 lbs.

Lift Assist: 40 lbs.

Construction: Aluminum and steel

Color: Black



10' Lighting/Speaker Stand

LS-SS7770

10740

Height Adjustment: 44" - 120"

Upper Shaft Tubing: 1 3/8" or 1 1/2"

Base Spread: 38" - 58"

Weight Capacity: 140 lbs

Construction: Steel and aluminum

Color: Black



Power Crank-up Speaker Stand

SS8800B+

12871

Upper Shaft Diameter: 1 3/8" w/ 1 3/8"

to 1 1/2" adapter included

Height Adjustment: 47" - 80"

Weight Capacity: 80 lbs

Construction: Aluminum and steel

Color: Black



Mini-Adjustable Speaker Stand

SSAS7000B

12662

Upper Shaft Diameter: 1 3/8"

Height Adjustment: 27" - 46"

Base Spread: 12.5"

Weight Capacity: 60 lbs.

Construction: Aluminum

Color: Black



Compact Speaker Stand Pack

SSP7750

10434

Includes: 2 stands and carry bag

Upper Shaft Diameter: 1 3/8"

Height Adjustment: 37" - 60"

Weight Capacity: 60 lbs

Construction: Aluminum

Bag material: Heavy-duty nylon

Color: Black



All-Aluminum Speaker Stand Pack
SSP7900
10633
Height Adjustment: 45" - 74.75"
Weight Capacity: 120 lbs each
Upper Shaft Diameter: 1 3/8" with 1 1/2" adapter included
Construction: Aluminum
Bag material: Heavy-duty nylon
Color: Black



Professional Speaker Stand Pack
SSP7850
12058
Height Adjustment: 46" - 74"
Weight Capacity: 120 lbs each
Construction: Steel
Color: Black



All-Aluminum Speaker Stand Pack
SSP7950
10634
Height Adjustment: 45" - 72"
Construction: Aluminum
Weight Capacity: 120 lbs each
Color: Black
Bag material: Heavy-duty nylon



Subwoofer Attachment Shaft
SS7740
12653
Length: 42"
Diameter: 1 3/8"
Weight Capacity: 160 lbs.
Construction: Steel
Color: Black



Adjustable Subwoofer Attachment Shaft
SS7745
10736
Length: 31 5/8" - 55"
Diameter: 1 3/8"
Weight Capacity: 100 lbs.
Construction: Steel
Color: Black



Subwoofer Pole with M20 Thread
SS7746
11713
Length: 30" - 54"
Diameter: 1 3/8"
Weight Capacity: 100 lbs.
Construction: Steel
Color: Black



Crank-Up Subwoofer Attachment Shaft
SS7747
10738
Length: 30" - 42"
Diameter: 1 3/8"
Weight Capacity: 135 lbs.
Construction: Steel
Color: Black



Adjustable Subwoofer Attachment Shaft

SS7745LOK
12030

Length: 32.5" - 47"
Diameter: 1 3/8"
Weight Capacity: 100lbs.
Construction: Steel
Color: Black



Speaker/Lighting Stand Skirt

SSA100B
12086 / Black

SSA100W
12087 / White

Application: Two-sided coverage hides cables and cords, while still providing easy access
Construction: Stretchable, durable nylon with built in bag
Color: Available in black or white



12" Speaker Bag

SB1200
14037

Application: Holds most 12" speakers
Bag Dimensions: 24.5" (L) x 14.5" (W) x 15" (D)
Construction: Heavy-duty padded nylon
Color: Black



Speaker Stand Bag

SSB6500
13160

Application: Holds 2 speaker stands, 6 mic stands or various other gear
Bag Dimensions: 50" (L) x 10" (W) x 5" (D)
Construction: Heavy-duty padded nylon
Color: Black



15" Speaker Bag

SB1500
14038

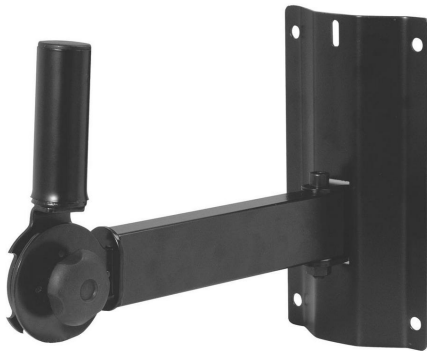
Application: Holds most 15" speakers
Bag Dimensions: 28" (L) x 17" (W) x 17" (D)
Construction: Heavy-duty padded nylon
Color: Black



Wall Mount Speaker Bracket

SS7914B
10735

Application: Mounting small speaker cabinets
Weight Capacity: 80 lbs.
Length: 15 1/2" (measured from inside of wall bracket to center of adapter sleeve)
Construction: Steel
Color: Black
Sold in Pairs



Adjustable Wall Mount Speaker Bracket

SS7322B
11715

Application: Small to medium speaker cabinet wall mount
Distance from Wall: 12.5" - 15"
Weight Capacity: 80 lbs.
Tilt Angle Adjustment: 90° out 30°
Left to Right and Adjustment: 30°
Color: Black
Sold in Pairs



Wall Mount Speaker Bracket

SS7323B
10719

Application: Small to medium speaker cabinet wall mount
Distance from wall: 12.5" - 15"
Weight Capacity: 100 lbs.
Tilt Angle Adjustment: 90° - 45°
Left to right angle adjustment: 30°
Construction: Steel
Color: Black
Sold in Pairs



Steerable Array Bracket

SS7990
14040

Application: Mounting small to medium speaker cabinets
Weight Capacity: 80 lbs per mount
Length: 17 3/4"
Steering: Up to 180° with correct cables
Includes: (6) 8mm eyebolts - (3 per mount)
Color: Black



Dual Mount Speaker Bracket

SS7920
10732

Application: Holds two 10" speaker cabinets with 1 3/8" inserts
Bracket Length: 20" from center of one insert
Weight Capacity: 80 lbs. distributed evenly
Construction: Steel
Color: Black



Exterior Mounting Bracket

EB9760
12582

Application: Mounting 1 3/8" speaker cabinet
Dimensions: 7 3/8" x 4 3/8"
Construction: Heavy-duty plastic
Mounting Options: (4) 3/8" holes (hardware included)
Color: Black



Locking Speaker Adapter

SSA45LOK
10455

Application: Prevents speaker shaft wobble
Diameter: 1 3/8"
Length: 12" including 3" overlap on speaker shaft
Weight Capacity: Determined by stand used
Construction: Steel tubing; plastic pressure pads
Color: Black



Speaker Stand Adapter

SSA3
12969

Application: Reduces 1 3/8" shaft to 1"
Inner Diameter: 1 3/8"
Outer Diameter: 1"
Construction: Steel
Color: Black



Adapter Sleeve for
Speaker Brackets

SSA2
12930

Application: Fits on 1 3/8" stand and mounts
into a 1 1/2" speaker cabinet
Inner Diameter: 1 3/8"
Outer Diameter: 1 1/2"
Construction: Steel
Color: Black



Speaker Cabinet Insert

SSA1.375 / SSA1.5
12657 / 12859

Application: Fits on speaker stand shaft and mounts into a
speaker cabinet
SSA1.375 Diameter: 1 3/8"
SSA1.5 Diameter: 1 1/2"
Construction: Steel
Color: Black



M20 Speaker Cabinet Adapter

SSA20M
11714

Application: M20 threaded mounting
Included: 4 mounting screws
Construction: Steel
Color: Black



Speaker Adapter for Mic Stands

MSA1.375
13415

Application: Converts mic stand into small speaker stand
Threading: 5/8"
Length: 3 1/4"
Diameter: 1 3/8"
Max Weight Capacity: 15 lbs
Weight: 0.3 lbs
Construction: Steel



Hex-Base Monitor Stands

SMS6600-P
13091

Height Adj: 36 1/2" - 54"
Platform Dimensions: 9 1/2" Square
Base Spread: 14"
Weight Capacity: 90 lbs.
Construction: Steel
Color: Black



Studio Monitor Stands (Pair)

SMS6000-P
10638

Height Adj: 36 1/2" - 54"
Platform Dimensions: 9 1/2" Square
Base Spread: 18"
Weight Capacity: 90 lbs.
Construction: Steel
Color: Black





Platform for Mic Stand

MSA6000

13509

Application: Converts mic stand into monitor stand
Dimensions: 9" square
Threading: 5/8"-27
Weight Capacity: 12 lbs.
Weight: 2 lbs.
Color: Black

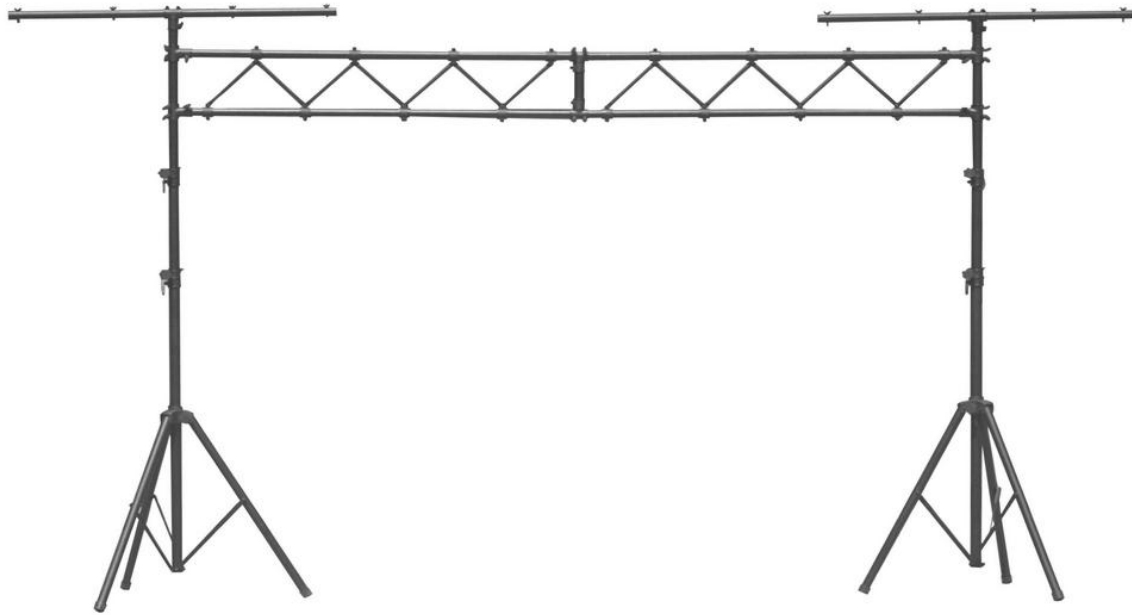


Desktop Monitor Stands

SMS4500-P

13398

Height Adjustment: 9" - 12 1/2"
Angle Adjustment: 0 - 15°
Base Dimensions: 10" x 10"
Platform Dimensions: 9" deep x 12" wide
Construction: Steel with EVA on platform and rubber feet
Color: Black



Lighting Stand with Truss

LS7730

10745

Application: 16 Par lighting stand with truss
Height Adjustment: 65" - 129"
Length: 120"
Base Spread: 48"
Weight Capacity: 200 lbs total
Construction: Aluminum
Color: Black



Lighting Stand with Side Bars

LS7720BLT

10668

Application: 8 Par lighting Stand
Height Adjustment: 60" - 120"
Base Spread: 48"
Weight Capacity: 110 lbs
Construction: Aluminum
Color: Black



Quick-Connect U-Mount®
Lighting Stand

LS7720QIK

10670

Application: 12 Par lighting Stand
Height Adjustment: 60" - 126"
Base Spread: 48"
Weight Capacity: 110 lbs
Construction: Aluminum and steel
Color: Black



Power Crank-Up Lighting Stand

LS7805QIK

13313

Application: 12 Par lighting Stand
Height Adjustment: 54" - 132"
Base Spread: 54"
Weight Capacity: 80 lbs
Construction: Aluminum and steel
Color: Black



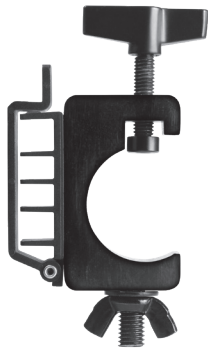
○ **Lighting Stand Bag**
LSB6500
35540

Application: Holds up to 2 stands
Dimensions: 13" (W) x 62" (L) x 9" (H)
Construction: Heavy-duty padded nylon
Color: Black



● **U-Mount® Lighting Arms**
LSA7700P
10667

Application: Add up to 6 additional par lights to existing stand
Length: 29"
Included: 6 Mounting wingnuts
Weight Capacity: 15 lbs per arm
Construction: Aluminum and steel
Color: Black



Lighting Clamp with Cable Management System
LTA4770
12045

Application: Lighting / cable management clamp
Tubing Maximum: 1 5/8" diameter
Includes: Pair of clamps
Color: Black



Heavy Duty Truss Clamp with Cable Management
LTA6880
12565

Application: Heavy lighting truss clamp
Tubing Maximum: 2"
Max Weight Capacity: 200 lbs
Unit Weight: 1.2 lbs.
Construction: aluminum and steel
Color: Black



Lighting Clamp w/ Cable Management System (Pair)
LTA4880
12482

Application: Lighting/cable management clamp
Tubing Maximum: 2" diameter
Includes: Pair of clamps
Color: Black



U-Mount® Lighting Clamp
LTA8770
12547

Application: Lighting clamp
Tubing Maximum: 1 1/2" diameter
Includes: Wing nut and bolt
Color: Black



Lighting Stand Hook Clamp
LTA7770
10743

Application: Lighting clamp
Tubing Maximum: 1 1/2" diameter
Includes: Wing nut and bolt
Color: Black



● **Ceiling Bar for Microphones and Lights**
MY900
13848

Application: Ceiling bar for microphones and lights
Length: 46.5"
Includes: wood screws for permanent mounting and brackets for ceiling tile mounting
Lug Threading: 5/8" - 27 (4 lugs Included)



LCD/Karaoke/Monitor Stand
FPS5000
12749

Mounting Bracket: VESA universal mount
Mount Angle Adjustment: 15° up/down
Max TV Size: 42"
Weight Capacity: 60 lbs.
Height Adjustment: 37" - 61"
Tray Dimensions: 6" x 9"
Base Threading: M20



Air-Lift Flat Screen Mount
FPS6000
11784

Mounting Bracket: VESA universal mount
Mount Angle Adjustment: 15° up/down
Max TV Size: 42"
Weight Capacity: 50 lbs.
Air Lift Assist: 40 lbs.
Height Adjustment: 47" - 74"
Base Spread: 46"



LCD Truss Mounting System

FPS7000

12545

Mounted Dimensions: 40" - 70"
Max Weight: 95 lbs.
Angle Adjustment: 10° up or down
Height Adjustment: 62.75" - 88.5"
Base Spread: 107" x 45.5"
Construction: Steel and aluminum

WARNING
This product can expose you to chemicals including Bis(2-ethylhexyl) phthalate, which is known to the State of California to cause cancer, and birth defects or other reproductive harm. For more information go to www.P65Warnings.ca.gov



LCD Truss Mounting System

FPS7400

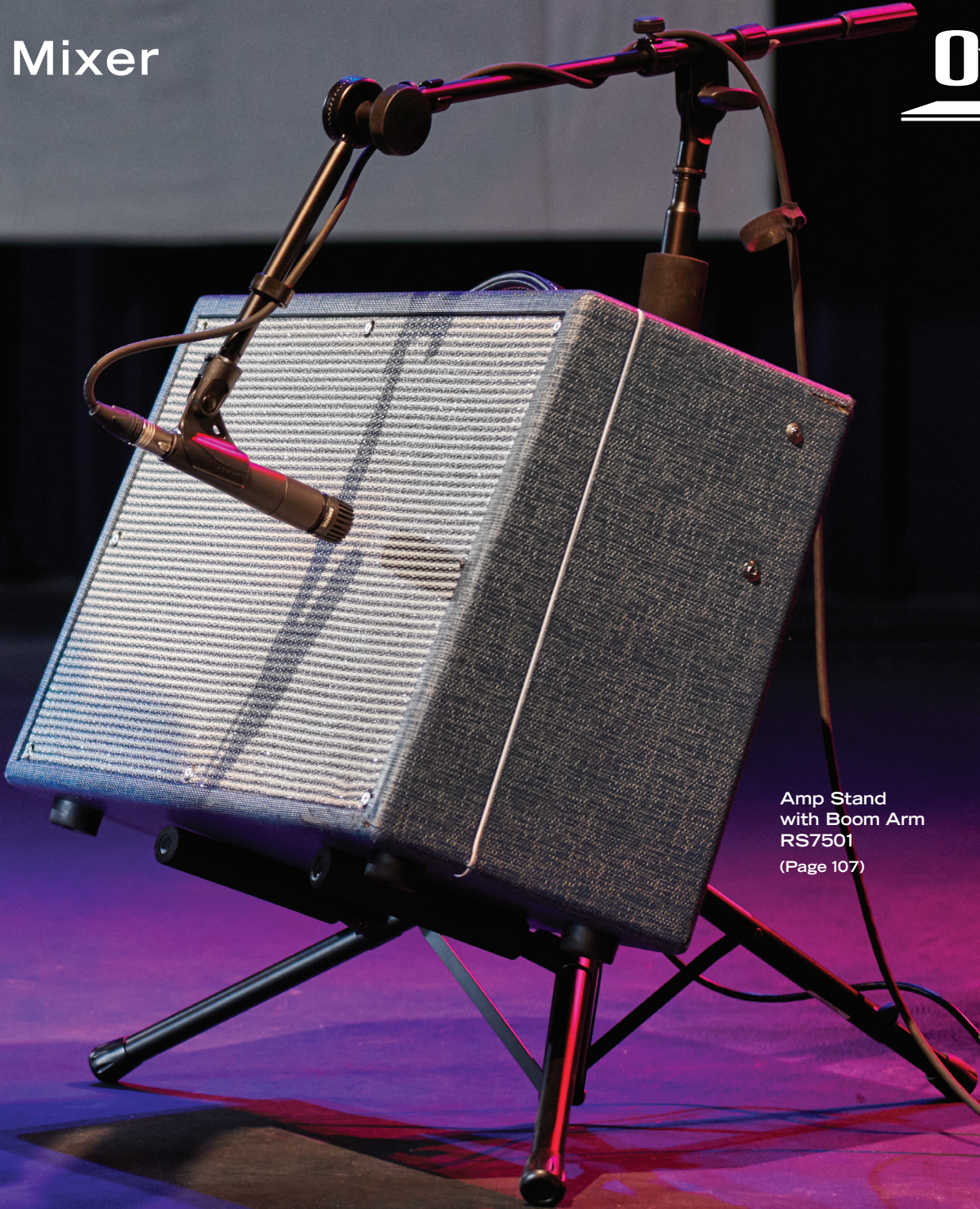
12546

Mounted Dimensions: 40" - 70"
Max Weight: 95 lbs.
Angle Adjustment: 5° up, 15° down, and 15° right and left
Height Adjustment: 62.75" - 88.5"
Base Spread: 107" x 45.5"

WARNING
This product can expose you to chemicals including Bis(2-ethylhexyl) phthalate, which is known to the State of California to cause cancer, and birth defects or other reproductive harm. For more information go to www.P65Warnings.ca.gov

Amplifier & Mixer

On-Stage®



Amp Stand
with Boom Arm
RS7501
(Page 107)



Utility Cart
UTC2200
12921

Application: Gear transportation
Weight Capacity: 485 lbs.
Compact Size: 18" (W) x 28.5" (L)
Extended Size: 18" (W) x 42.5" (L)
Platform Bed Height: 10.5"
Handle Height: 31"



Table Top Rack Stand
RS7030
11185

Application: 12-Space rack
Weight Capacity: 75 lbs.
Height: 23"
Width: 19.5"
Depth: 14"
Tubing: 15 x 30mm
Construction: Steel
Color: Black



Foldable Tiltback Amp Stand
RS4000
50519

Application: Small amp and practice amps
Weight Capacity: 100 lbs.
Upper Back Arm Length: 14"
Lower Arm Length: 8"
Floor Dimensions: 12" (W) x 18" (D)
Construction: Steel
Tubing: 3/4"
Color: Black



Foldable Tiltback Amp Stand
RS6000
11180

Application: Medium to large amps
Weight Capacity: 120 lbs.
Upper Back Arm Length: 18"
Lower Arm Length: 12"
Floor Dimensions: 14" (W) x 21.5" (D)
Construction: Steel
Tubing: 3/4"
Color: Black



Tiltback Amp Stand
RS7000
11653

Application: Stage / studio amplifiers and monitors
Weight Capacity: 150 lbs.
Height Adjustment: 17" - 24"
Upper and Lower Arm Length: 12"
Width: 12"
Arm Spread: 13"
Base Spread: 15.5"
Construction: Steel
Color: Black



Pro Tiltback Amp Stand
RS7705
12954

Application: Stage / studio amplifiers and monitors
Weight Capacity: 90 lbs.
Arm Width: 12"
Arm Depth: 11"
Base Spread: 17"
Construction: Steel
Color: Black



Tiltback Tripod Amp Stand
RS7500
11181

Application: Stage / studio amplifiers and monitors
Weight Capacity: 100 lbs.
Height Adjustment: 8" - 10" (support arm height above floor)
Back Bumper Height Adjustment: 19" - 36"
Mic Mount Height Adjustment: 23" - 37"
Support Arm Lengths: 7.32"
Angle Adjustment: 95° - 110°
Folded Dimensions: 5" (W) x 4.5" (H) x 26.5" (L)
Construction: Steel
Color: Black



Amp Stand with Boom Arm
RS7501
14014

Application: Stage / studio amplifiers and monitors / amp miking
Weight Capacity: 100 lbs.
Height Adjustment: 8" - 10" (support arm height above floor)
Back Bumper Height Adjustment: 19"-36"
Mic Mount Height Adjustment: 23" - 37"
Amp Support Arms Length: 7.32"
Angle Adjustment: 95° - 110°
Boom Arm Size: 22" Boom arm with 7" adjustable mini boom
Boom Arm Tubing: 16mm
Folded Dimensions: 5" (W) x 4.5" (H) x 26.5" (L)
Color: Black



Mobile Equipment Stand
MIX-400
12562

Application: Holds mixers and small to mid-size audio gear
Weight Capacity: 88 lbs.
Height Adjustment: 28" - 38"
Platform Width Adjustment: 14.5" - 21.5"
Platform Depth Adjustment: 12" - 15.5"
Base Spread: 23"
Construction: Steel and plastic



Antenna Rack Mount
RFM1210
13558

Application: Holds standard rack mountable antennas
Size: 1 Standard rack unit
Includes: (6) 3' 50 ohm BNC cables, (2) copper signal splitters, (2) 40cm x 8cm strips of hook & loop
Color: Black



Dual Mic Amp Bar
MY650
13089

Application: Dual miking for amps
Length: to 6"
Height Adjustment: 6" - 12"
Threading:: 5/8" - 27
Color: Black and chrome



Amp Tilt System
RS100
13020

Application: Angle small to mid-size amps
Angle: Up to 30°
Material: Nylon with wood and plastic inserts



Posi-Lok Combo Boom Arm
MSA7500CB
10759

Application: Flexibility for miking vocals or instruments
Length: 22" main boom with 7" mini-boom
Max Rotation: 360°
Threading: 5/8" - 27
Compatibility: RS7500 or other stands with 5/8" - 27 threading
Color: Black



On-Stage®

Professional
Studio Headphones
WH4500
(Page 116)



Instrument Cables

Connectors: Standard
Wire Gauge: 22AWG
Wire: Copper
Warranty: Limited lifetime

- | | |
|-------------------------------------|--|
| QTR-QTR 10'
IC-10 / 10797 | QTR-QTR 15'
IC-15 / 10779 |
| QTR-QTR 25'
IC-25 / 10787 | Right Angle QTR-QTR 20'
IC-20R / 10788 |
| QTR-QTR 6'
IC-6 / 10959 | Right Angle QTR-QTR 10'
IC-10R / 12923 |
| QTR-QTR 20'
IC-20 / 10798 | Heat-Shrink Relief QTR-QTR 10'
IC-10HS / 10799 |
| QTR-QTR 3'
IC-3 / 10796 | Braided QTR-QTR 20'
IC-20BR / 11004 |



Instrument Cables Pro Neutrik

Connectors: Neutrik
Wire Gauge: 20AWG
Wire: Copper
Shielding: Tinned copper braiding
Warranty: Limited lifetime

- | | |
|---------------------------------------|---------------------------------------|
| QTR-QTR 10'
IC-10NN / 12013 | QTR-QTR 20'
IC-20NN / 12015 |
| QTR-QTR 25'
IC-25NN / 12082 | QTR-QTR 3'
IC-3NN / 12011 |
| QTR-QTR 6'
IC-6NN / 12012 | QTR-QTR 15'
IC-15NN / 12014 |



Microphone Cables

Connectors: Standard
Wire Gauge: 22AWG
Wire: Copper
Shielding: Spiral copper
Warranty: Limited lifetime

- | | |
|---------------------------------------|--|
| XLR-XLR 10'
MC12-10 / 11032 | XLR-XLR 50'
MC12-50 / 11033 |
| XLR-XLR 25'
MC12-25 / 11028 | XLR-XLR 6'
MC12-6 / 11037 |
| XLR-XLR 25'
MC12-25 / 11038 | XLR-XLR 20'
MC12-20XLR / 11031 |
| XLR-XLR 3'
MC12-3 / 11034 | Hi-Z XLR-QTR 20'
MC12-20HZ / 11029 |
| XLR-XLR 15'
MC12-15 / 11036 | |



Pro Microphone Cables Neutrik

Connectors: Neutrik
Wire Gauge: 22AWG
Wire: Copper
Shielding: Tinned copper braiding
Warranty: Limited lifetime

- | | |
|-----------------------------------|---|
| XLR 10'
MC-10NN / 12002 | Active Monitor 20'
MC-20NNA / 12076 |
| XLR 50'
MC-50NN / 12007 | XLR 6'
MC-6NN / 12003 |
| XLR 3'
MC-3NN / 12083 | XLR 20'
MC-20NN / 12006 |
| XLR 15'
MC-15NN / 12005 | Hi-Z 25' XLR-QTR
MC-25NN HZ / 12074 |



QTR-QTR Speaker Cables

Connectors: Standard
Wire Gauge: 14AWG
Wire: Copper
Warranty: Limited lifetime

- | | |
|---------------------------------------|---|
| QTR-QTR 3'
SP14-3 / 12922 | QTR-QTR 50'
SP14-50 / 11084 |
| QTR-QTR 6'
SP14-6 / 11086 | Banana-QTR 10'
SP14-10-BA / 11999 |
| QTR-QTR 10'
SP14-10 / 11083 | Banana-QTR 25'
SP14-25-BA / 11998 |
| QTR-QTR 25'
SP14-25 / 11087 | |



Speaker Cables with Neutrik NL2 Speakon Connectors

Connectors: Neutrik twist-lock speakon
Wire Gauge: 14AWG
Wire: Copper
Warranty: Limited lifetime

- | | |
|---|---|
| NL2-NL2 10'
SP14-10SS / 10562 | NL2-QTR 10'
SP14-10SQ / 10652 |
| NL2-NL2 25'
SP14-25SS / 11988 | NL2-QTR 25'
SP14-25SQ / 11995 |
| NL2-NL2 50'
SP14-50SS / 11996 | NL2-QTR 50'
SP14-50SQ / 10560 |



Perfect Pair Powered Speaker Interconnect Cables

Connectors: Neutrik
Signal Wire Gauge: 24AWG
Power Wire Gauge: 14AWG
Wire: Copper
Warranty: Limited lifetime

- Neutrik XLR 25'**
MPCOMBO-25 / 11944
- Neutrik XLR 50'**
MPCOMBO-50 / 11945
- Neutrik XLR 75'**
MPCOMBO-75 / 11946
- Neutrik XLR 100'**
MPCOMBO-100 / 11947

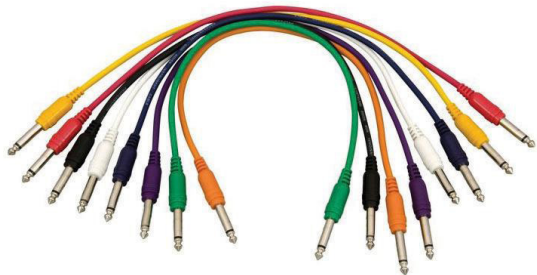


Right-Angle Patch Cables (8 Pack)

PC18-17QTR-R
10412

PC18-17TRS-R
10413

Application: Guitar pedals, audio equipment
PC18-17QTR-R Cable Type: QTR-QTR
PC18-17TRS-R Cable Type: TRS-TRS
Connectors: Right Angle
Length: 17"
Color: Assorted



Straight Patch Cables (8 Pack)

PC18-17QTR-S
10412

PC18-17TRS-S
10413

Application: Guitar pedals, audio equipment
PC18-17QTR-S Cable Type: QTR-QTR
PC18-17TRS-S Cable Type: TRS-TRS
Connectors: Straight
Length: 17"



Straight Pedal Coupler

PC304
11978

Application: Guitar pedals
Connector: 1/4" to 1/4" (straight)
Color: Gold



Offset Pedal Coupler

PC305
11977

Application: Guitar pedals
Connector: 1/4" to 1/4" (offset)
Color: Gold



6" Right-Angle Pedal Coupler

PC306B
11973 / Black

PC306T
11974 / Tweed
Application: Guitar pedals
Cable Type: QTR-QTR
Connectors: Right angle
Length: 6"



12" Right-Angle Pedal Coupler

PC312B
11975 / Black

PC312T
11976 / Tweed
Application: Guitar pedals
Cable Type: QTR-QTR
Connectors: Right angle
Length: 12"
Color: Black



8 x 4 Stage Snake

SNK8450
11711 / 50'

SNK84100
11702 / 100'
Application: Live sound
XLR Inputs: 8 (female)
XLR Outputs: 4 (male)
Includes: Nylon bag



24 x 4 Stage Snake

SNK24450
11709 / 50'

SNK244100
12415 / 100'
Application: Live sound
XLR Inputs: 24 (female)
XLR Outputs: 4 (male)
Includes: Nylon bag



Passive DI Box

DB500
12558

Application: Acoustic guitars, bass guitars, keyboards, and more
Inputs: 1/4"
Output: XLR
Power: Passive / not required
Dimensions: 4.75" (W) x 1.375" (H) x 2.875" (D)
Weight: 0.5 lbs.



Passive Multi-Media DI Box

DB1050
12557

Application: Computers, mp3 players, keyboards, projectors, and DJ equipment
Input: Stereo 1/4", 3.5mm, stereo RCA, and XLR
Output: Mono XLR Low-Z out
Power: Passive / not required
Construction: Metal w/ nylon bumpers
Dimensions: 6" (L) x 3.5" (W) x 1.5" (H)
Weight: 0.70 lbs.



12 x 4 Stage Snake

SNK12450
11704 / 50'

SNK124100
11665 / 100'
Application: Live sound
XLR Inputs: 12 (female)
XLR Outputs: 4 (male)
Includes: Nylon bag



16 x 4 Stage Snake

SNK16450
11707 / 50'

SNK164100
11706 / 100'
Application: Live sound
XLR Inputs: 16 (female)
XLR Outputs: 4 (male)
Includes: Nylon bag



20 x 4 Stage Snake

SNK20450
12414 / 50'

SNK204100
11708 / 100'
Application: Live sound
XLR Inputs: 20 (female)
XLR Outputs: 4 (male)
Includes: Nylon bag



Active DI Box

DB1000
12556

Application: Acoustic guitars, bass guitars, keyboards, etc.
Inputs: 1/4"
Output: XLR
Power: Phantom
Construction: Metal with nylon bumpers
Dimensions: 6" (L) x 3.5" (W) x 1.5" (H)
Weight: 0.70 lbs.



Active DI Box

DB1100
12555

Application: Acoustic guitars, bass guitars, keyboards, etc.
Inputs: Stereo 1/4"
Output: XLR (mono)
Power: Phantom
Construction: Metal with nylon bumpers
Dimensions: 6" (L) x 3.5" (W) x 1.5" (H)
Weight: 0.70 lbs.



Active Stereo Multi-Media DI Box

DB2050
12554

Application: Computers, mp3 players, keyboards, projectors, and DJ equipment
Inputs: Stereo 1/4" / 3.5mm / RCA
Outputs: Isolated stereo XLR
Power: Phantom
Construction: Metal with nylon bumpers
Dimensions: 6" (L) x 3.5" (W) x 1.5" (H)
Weight: 0.70 lbs.



Passive USB DI Box

DB2150

13311

Application: Computers, mp3 players, projectors, and DJ equipment

Input: USB 2.0

Output: XLR (stereo), 3.5mm headphone

Power: Phantom / not required

Construction: Metal w/ nylon bumpers

Dimensions: 5.75" (L) x 3.5" (W) x 1.5" (H)

Weight: 0.70 lbs.



Platinum Series Condenser Microphone

OSM-800

34258

Application: Vocals, percussion, acoustic instruments

Polar Pattern: Cardioid

Frequency Response: 20Hz - 20kHz

Connector: 3-Pin XLR

Power Requirement: +48v Phantom power

Weight: 2.2 lbs



Low-Z Dynamic Handheld Microphone

AS400

11158

Application: Dynamic microphone

Pattern: Cardioid

Frequency Response: 80Hz - 12kHz

Impedence: 600 Ohm

Includes: 20' cable



Stereo Bluetooth Converter

BC2000

14029

Application: Stereo wireless Bluetooth audio

Includes: (2) pairable (stereo) Bluetooth receivers and (2) USB charging cables

Version: Bluetooth V4.0

Power: 3.7 lithium battery with included USB charging cable

Wireless Transmission: 30'



Mini Bluetooth Speaker with U-Mount® Clamp

BS4080

11007

Application: Wireless Bluetooth audio

Transmission Range: 30'

Battery: Rechargeable lithium

Material: Aluminum

Color: Black

WARNING
This product can expose you to chemicals including Bis(2-ethylhexyl) phthalate, which is known to the State of California to cause cancer, and birth defects or other reproductive harm. For more information go to www.P65Warnings.ca.gov



Dual-Mode Bluetooth Stereo Headphones

BH4500

10772

Application: Wireless Bluetooth audio

Bluetooth Version: 4

Speaker: 40 - 20k Hz

Playback Time: 10 Hours

Charging Time: 2.5 Hours

Charging Set Up: Micro USB

Transmission Range: 30'

Microphone: Yes



Low-Z Dynamic Vocal Microphone

AS420

11159

Application: Dynamic microphone

Pattern: Cardioid

Frequency Response: 80Hz - 13kHz

Impedence: 500 Ohm

Includes: 20' cable



Gooseneck Mic

DJM618

12664

Application: Mixers, podiums

Length: 18"

Cardioid Pattern: Unidirectional

Frequency Response: 50Hz - 10KHz

Impedence: 500 Ohms

Connector: 3 Pin male XLR

WARNING
This product can expose you to chemicals including Bis(2-ethylhexyl) phthalate, which is known to the State of California to cause cancer, and birth defects or other reproductive harm. For more information go to www.P65Warnings.ca.gov



Bluetooth Converter

BC1000

13322

Application: Wireless Bluetooth audio

Version: Bluetooth V4.0

Power: 3.7V lithium battery with included USB charging cable

Battery Life: 20 Hours

Wireless Transmission Range: 30'



Professional Studio Headphones

WH4500

12970

Application: Home and studio recording

Style: Closed

Driver Size: 40mm

Frequency Response: 15Hz - 28kHz

Cable Length: 10' (detachable)

Includes: Nylon carrying bag

Color: Black



1/8" to 1/4" Adapter

WHA4500

13055

Application: Headphones, audio devices / equipment

Size: 1/4" male to 1/8" female

Color: Gold



4-Channel Headphone Amp

HA4000

12973

Application: Recording, audio playback

Input Connector: 1/4" TRS Stereo

Output Connector: 1/4" TRS Stereo

Max Gain: 20dB per channel

Power Supply: 12V - 18V DC adapter (included)



Headphone Bag

HB4500
13053

Application: 1 pair of standard sized headphones
Dimensions: 12.5" (L) x 9" (W)
Material: Nylon
Color: Black



Cable Ties

CTA6600
12464

Application: Cable storage
Quantity: 5
Material: Nylon
Color: Black



Cable Management System

CM200
13410

Application: Gear storage
Size: 29" (L) x 4.5" (W) (depth of hook: 4")
Material: Aluminum
Color: Black

Studio



Desktop
Monitor Stands
SMS4500-P
(Page 120)

4-Channel
Headphone Amp
HA4000
(Page 116)

Professional Studio
Headphones
WH4500
(Page 116)





Wood Workstation

WS7500B
12504 / Black

WS7500RB
12503 / Rosewood

Dimensions: 43" (W) x 38" (H) x 23.5" (D)

Keyboard Tray Height: 25"

Desktop Height: 29"

Upper Platform Height: 37.5"

Weight Capacity: 175 lbs.

Construction: Wood and steel

Color: Black or rosewood



Rack Cabinet

WSR7500B
12508 / Black

WSR7500RB
12507 / Rosewood

Application: 12 Space rack cabinet

Dimensions: 30" (L) x 23.8" (W)

Height with Feet: 29" - 30"

Included: 4 removable casters - 1 pair locking

Height with Casters: 30.5"

Construction: Laminated wood and steel

Color: Black or rosewood



Workstation Corner Accessory

WSC7500B
12506 / Black

WSC7500RB
12505 / Rosewood

Application: 45 degree corner add-on to WS7500 workstation

Dimensions: 23.8" (W) x 26.8" (D) x 29" - 30" (H)

Weight Capacity: 60 lbs.

Construction: Laminated wood and steel

Color: Black or rosewood



Single Space Rack Mount

WSA7500
12904

Application: Under-furniture rack mount

Dimensions: 19" (W) x 3.5" (H) x 4" (D)

Includes: 2 single space rack mounts, 1 19" 1U blank rack panel, 4 screws for pre-drilled WS7500, 2 self-tapping screws, 12 rack-mounting screws

Construction: Steel

Color: Black



Laptop Stand

LPT5000
11739

Platform Dimensions: 9.25" x 10.8"

Height Adjustment: 6.3" - 10.9"

Weight Capacity: 8 lbs

Color: Black



Multi-Purpose Laptop Stand

LPT6000
13231

Platform Dimensions: 9.5" - 14.5" (W) x 12" (D)

Height Adjustment: 9.25" - 14.25"

Weight Capacity: 10 lbs

Includes: Clamps for desk / partition mounting

Color: Black



Desktop Monitor Stands

SMS4500-P
13398

Height Adjustment: 9" - 12 1/2"

Angle Adjustment: 0 - 15°

Base Dimensions: 10" x 10"

Platform Dimensions: 9" x 12"

Construction: Steel with EVA on platform and rubber feet

Color: Black



Deluxe Laptop Stand

LPT7000

13430

Platform Dimensions: 15.5" - 11"
Pad Dimensions: 11" x 7"
Height Adjustment: 31" - 51"
Angle Adj: 0 - 90°
Weight Capacity: 12 lbs
Color: Black



Heavy-Duty Tablet Stand

TS9901

99690

Height Adjustment: 24" - 38"
Folded Length: 14"
Base Spread: 19"
Threading: 5/8" - 27
Color: Black



Travel-Ease Tablet Stand

TS9900

99620

Height Adjustment: 16.5" - 27"
Folded Length: 13.5"
Base Spread: 14"
Color: Black



Tablet Case with U-Mount®

TCM9150

11734

Holder Dimensions: 7.5" x 9.75"
Rotation: 360°
Clamp: 0.45" - 0.75"
Color: Black



Tablet/Smart Phone Holder

TCM1500

13534

Dimensions: 8" - 12" (H) x 3.5" (D) x 9.5" (W)
Rotation: 360°
Clamp: .75" - 1"
Color: Black



U-Mount® Ball Joint Adapter

UM-01

11745

Application: Mounts TCM series to any 5/8" - 27 male threaded stand or accessory
Tilt Angle Adjustment: 180°
Rotational Adjustment: 360°
Color: Black Nickel



U-Mount® Universal Grip-On System with Mounting Bar

TCM1900

12944

Application: Tablet holder
Holder Dimensions: 2.5" - 9"
Rotation: 360°
Clamp: 0.45" - 0.75"
Color: Black

WARNING
This product can expose you to chemicals including Bis(2-ethylhexyl) phthalate, which is known to the State of California to cause cancer, and birth defects or other reproductive harm. For more information go to www.P65Warnings.ca.gov



U-Mount® Female-to-Female Adapter

UM-88

10501

Application: Convert 5/8" - 27 male threading to 5/8" - 27 female threading
Color: Black



U-Mount® Universal Grip-On System with Round Clamp

TCM1901

12945

Application: Tablet holder
Holder Dimensions: 2.5" - 9"
Rotation: 360°
Clamp: 0.75" - 1.14"
Color: Black

WARNING
This product can expose you to chemicals including Bis(2-ethylhexyl) phthalate, which is known to the State of California to cause cancer, and birth defects or other reproductive harm. For more information go to www.P65Warnings.ca.gov



U-Mount® Pull-Back Release Sleeve

UM-97

10490

Application: Quick-release option for TCM series and MY800
Threading: 5/8" - 27
Color: Black



U-Mount® Universal Grip-On System with Bullet Nose

TCM1908

12946

Application: Tablet holder
Holder Dimensions: 2.5" - 9"
Rotation: 360°
Clamp: 0.5" - 2"
Color: Black

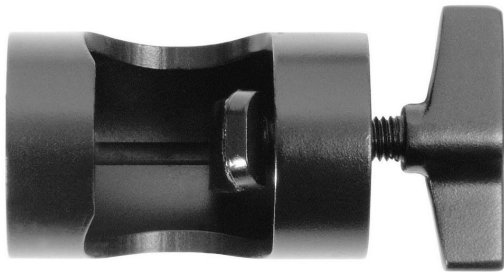
WARNING
This product can expose you to chemicals including Bis(2-ethylhexyl) phthalate, which is known to the State of California to cause cancer, and birth defects or other reproductive harm. For more information go to www.P65Warnings.ca.gov



U-Mount® Male-to-Male Adapter

UM-99
10486

Application: Convert 5/8" - 27 female threading to 5/8" - 27 male threading
Color: Black



U-Mount® Universal Round Mount

UM-5001
10489

Application: Mounting clamp for TCM or mic accessories
Threading: Female 5/8" - 27
Color: Black



U-Mount® Desk Flange Mount

UM5006
12056

Application: Mounts U-Mount® posts and accessories to flat surfaces
Diameter: 2.25"
Threading: Female 5/8" - 27
Shock Pad: 3mm
Included: 3 mounting screws
Color: Black



Broadcast Boom Arm

MBS5000
12550

Application: Flexible positioning of mic for broadcast/webcast
Vertical Arm Length: 19.5"
Horizontal Arm Length:: 19.5"
Total Reach: 38"
Weight Capacity: 3.5 lbs.
Included: 10' XLR pre-installed cable
Clamps: C-Clamp and flange mount
Color: Black



Isolation Shield

ASMS4730
12815

Dimensions: 18.5" (W) x 12" (L) x 2" (D)
Height Adjustment: 5.5" from level
Depth Adjustment: 2" - 7" from screen
Weight: 4.5 lbs.
Material: Vented aluminum with 2" acoustic foam
Color: Black and chrome

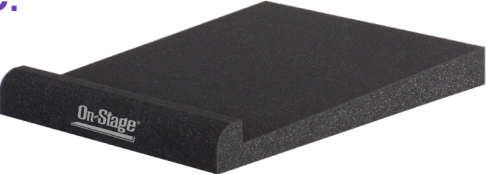
A.



B.



C.



Foam Speaker Platforms

A. ASP3001

12831 / Small

B. ASP3011

12830 / Medium

C. ASP3021

12824 / Large

ASP3001 Dimensions: 6.5" (W) x 11.5" (D) x 1.5" (D)
ASP3011 Dimensions: 10.5" (W) x 12.5" (D) x 1.5" (D)
ASP3021 Dimensions: 15.25" (W) x 13" (D) x 1.5" (D)
Includes: 2 bases and 2 wedges
Material: Acoustic foam
Color: Black



U-Mount® Accessory Kit

TCA1066
10268

Application: Accessories for U-Mount®
Includes: Drawstring bag, presentation sleeve, additional mounting posts, and post end cap



U-Mount® Powerbank

TB1000
10578

Application: Mobile device powerbank
Input: DC-5V
Output: 5.0 VDC +/- 0.2V
Capacity: 2200mAh
Charge Life: 4 hours - rechargeable
Dimensions: 3.6" x 0.86"
Weight: 0.16 lbs

WARNING
This product can expose you to chemicals including Bis(2-ethylhexyl) phthalate, which is known to the State of California to cause cancer, and birth defects or other reproductive harm. For more information go to www.P65Warnings.ca.gov



U-Mount® Powerbank

TB1004
11027

Application: Mobile device powerbank
Input: DC-5V
Output: 5.0 VDC +/- 0.2V
Capacity: 7800mAh
Charge Life: 13 hours - rechargeable
Dimensions: 8.8" x 0.86"
Weight: 0.42 lbs

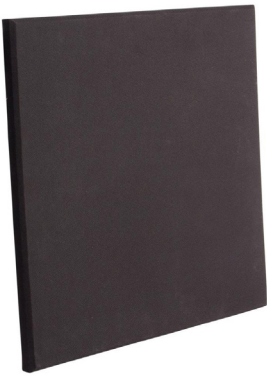
WARNING
This product can expose you to chemicals including Bis(2-ethylhexyl) phthalate, which is known to the State of California to cause cancer, and birth defects or other reproductive harm. For more information go to www.P65Warnings.ca.gov



Professional Studio Boom Arm

MBS7500
12623

Application: Flexible positioning of mic for broadcast/webcast
Vertical Arm Length: 19.5"
Horizontal Arm Length: 19.5"
Total Reach: 38"
Threading: 5/8" - 27
Weight Capacity: 3.5 lbs.
Clamps: C-Clamp and flange mount
Color: Black



Acoustic 1" Panel for Professional Applications

AP3500
12971

Dimensions: 24" (L) x 24" (W) x 1" (D)
Weight: 2.75lbs + 0.65 for hanger and screws
Included: 2 wall mount clips and 6 anchor screws
Material: High density, class A fire rated acoustic fiberglass
Color: Black